

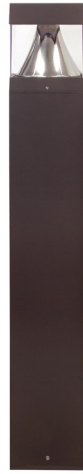
PROJECT NAME: _____ CAT. #: _____
 NOTES: _____ FIXTURE SCHEDULE: _____

PathMAX™ Slim Bollards

CCT Selectable



Round Dome
Type V



Square
Type V



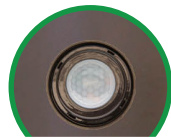
Round Dome
Louver



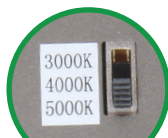
Round Flat
Louver



Round Flat
Type V



Sensor/Photocell



CCT
Selectable
Switch

Product Description:

The PathMAX™ Slim LED Bollards offer a modular design with field selectable color temperatures (3000K, 4000K, 5000K) that simplify the product choice for distributors and contractors. Available in round and square silhouettes, the bollards are controls ready and designed with a specialized optics that projects light down and outward for ample illumination on walkways.

Features:

- CCT Selectable 3000K, 4000K & 5000K
- Modular design with field replaceable heads and shafts
- Lengths: 42" , 36"
- Distributions / optics: Cone reflector (Type V), louver
- Vandal resistant screws

Dimming:

- 120-277V option available with 0-10V dimming (0%)

Construction:

- Die-cast aluminum body
- Clear Polycarbonate lens

Mounting:

- Mounting kit available standard with each bollard (includes mounting base, anchor bolts, nuts and washers)
- Option available to pre-ship Mounting Kit as an additional accessory

Listings:

- UL Listed for Wet Locations, Outdoor
- DLC Premium: Not all product variations listed on this page are DLC qualified. Visit <https://www.designlights.org/search/> to confirm qualification

Controls Ready:

Simple plug and play Sensor Receptacle/Socket enables installation of c-Max control nodes, photocell and motion sensor without changing the fixture.

Ordering Information

| FAMILY | - | SUB FAMILY | SHAPE | STYLE | WATTAGE | VOLTAGE | CCT | DISTRIBUTION | HEIGHT | FINISH | CONTROLS |
|---|---|---------------------|---------------------------------------|--|-----------------|---------------------|-------------------------------------|--|---------------------------------------|---|---------------------------------|
| BL = PathMAX™ Bollard, Slim Series | | CL = Classic | R = Round S = Square | D = Dome Top F = Flat Top | 22 = 22W | U = 120-277V | CS = 3000/ 4000/ 5000K | BLANK = Type V LR = Louvers | BLANK = 42" 36 = 36" | B = Bronze <i>Contact Maxlite for custom finishes</i> | CR = Controls Ready port |

¹Only available as a Flat Top, Type V distribution, 42" model

²Only available with 42" height

DLC ID

| MODEL NUMBER | DLC ID |
|-------------------------------------|--------------|
| BL-CLSF22UCSB[BLANK; CR] | PLANH2MJUG7Y |
| BL-CLRD22UCS[BLANK, 36]B[BLANK; CR] | PLGDLA1VO1NH |
| BL-CLRF22UCS[BLANK, 36]B[BLANK; CR] | PLZNC7TMOEDP |

*Louver models are not DLC qualified.

Visit <https://www.designlights.org/search/> to confirm qualification of other product variations.

Accessories

| MODEL NUMBER | ORDER CODE | DESCRIPTION | IMAGE |
|-------------------|------------|--|-------|
| CN-REMOTE | 105567 | Control Node Remote Control | |
| CN-RDMSB | 105566 | Control Node Round, PIR Motion Sensor/ Photocell, Bronze, IP66 | |
| CN-RDPCB | 105569 | Photocell Node Round, Bronze, IP66 | |
| NN-RDB | 105897 | Network Node Round, Bronze | |
| BL-CLSF22BASEKIT* | 108292 | PathMax Slim Square Bollard, Template and Anchor Bolts Kit | |
| BL-CLRX22BASEKIT* | 108293 | PathMax Slim Round Bollard, Template and Anchor Bolt Kit | |

*To pre-ship order in addition to the fixture. Discard mounting kit that comes with the fixture.

5 YEAR WARRANTY **5-year standard warranty with labor allowance*** (further details available at www.maxlite.com/warranties)

PathMAX™ Slim Bollards CCT Selectable

Dimmers

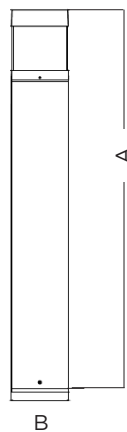
| | |
|---------|----------------------------------|
| LEVITON | DD710-BDE, IP-710-LFZ, DS710-10E |
| LUTRON | DVTV-WH, DVSTV-453P |

Specifications

| | BL-CRSF22UCSB (Square, Type V) | BL-CLRx22UCSxxB (Round, Type V) | BL-CLR22UCSLRB (Round, Louver) |
|-----------------------|-----------------------------------|-------------------------------------|-----------------------------------|
| Power Consumption (W) | | 22W | |
| Lumens Delivered (lm) | 2860 | 2860 | 1320 |
| Efficacy (lm/W) | 130 | 130 | 60 |
| CRI | | ≥80 | |
| CCT (K) | | CCT Selectable 3000K, 4000K & 5000K | |
| BUG Rating | B1-U3-G1 | | B1-U3-G2 |
| L70 Lifetime (hrs) | | ≥50,000 Hrs | |
| Input Voltage | | 120-277Vac, 50/60Hz | |
| Power Factor | | ≥0.9 | |
| Operating Temperature | | -40°F - 122°F (-40°C - 50°C) | |
| Listings | | DLC Premium, UL Listed, IP65 | |
| Environment | | Outdoor, Wet location | |
| Warranty | | 5 year warranty | |

Dimensions:

| Bollard | A (H) | B (W) |
|--------------------|--------|-------|
| 42" Square | 42.00" | 6.30" |
| 42" Round Flat Top | 42.00" | |
| 42" Round Dome Top | 43.66" | |
| 36" Round Flat Top | 36.00" | |
| 36" Round Dome Top | 37.68" | |



Square

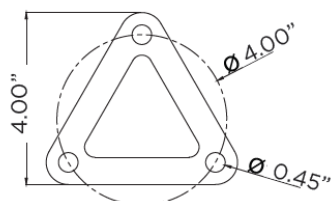


Round Flat Top

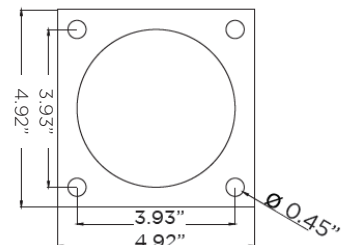
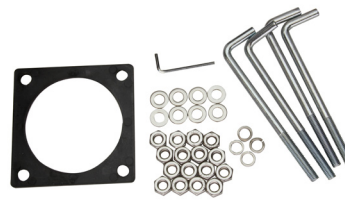


Round Dome Top

Mounting Kit Details: (Included standard)



Round



Square

PathMAX™ Slim Bollards

CCT Selectable

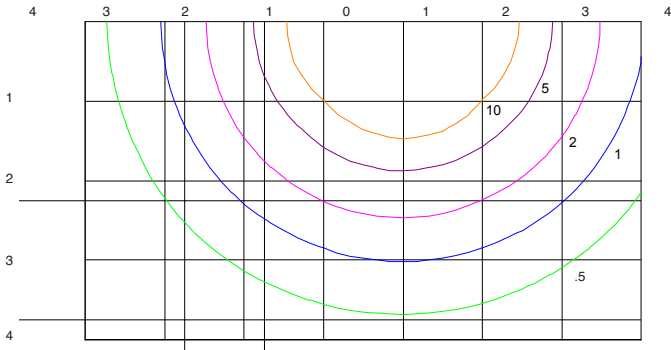
ISOFOOTCANDLE:

Each gridline represents one mounting height.
 For mounting heights other than noted multiply FC by the below factor.

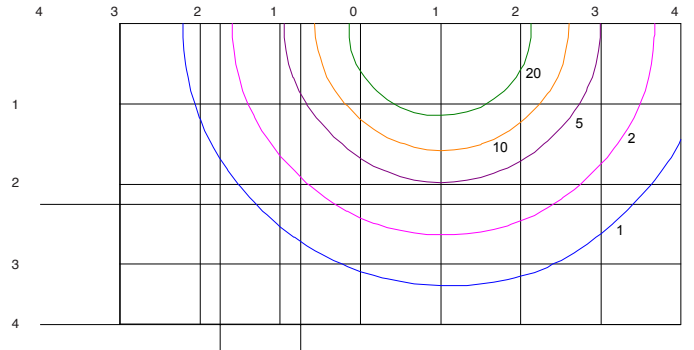
$$\text{Factor} = \frac{(\text{Chart's Mtg Height})^2}{(\text{Actual Mtg Height})^2}$$

LEGEND

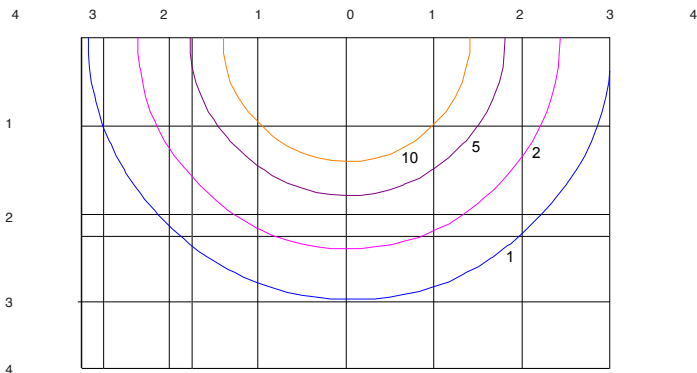
- 0.5 fc
- 5 fc
- 1 fc
- 10 fc
- 2 fc
- 20 fc



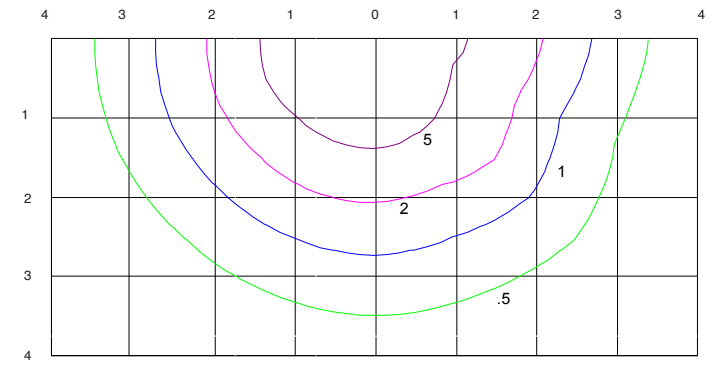
42" SQUARE



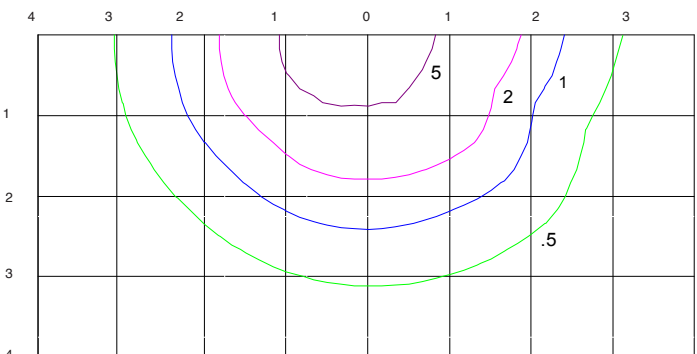
36" ROUND TYPE V



42" ROUND TYPE V



36" LOUVER



42" LOUVER