

PROJECT NAME: \_\_\_\_\_ CAT. #: \_\_\_\_\_  
 NOTES: \_\_\_\_\_ FIXTURE SCHEDULE: \_\_\_\_\_

# Value Canopy/Parking Fixture CP Series



**20-70W**



**100W**

### Product Description:

The Value Series Canopy/Parking fixture is an economical retrofit solution for 150-250W HID garage and canopy luminaires. Offered in multiple wattages, with different lens options for parking garage and canopy distributions, the CPL can address a variety of canopy lighting needs. The series is available with an internal motion sensor option that can be conveniently controlled with a remote control (sold separately).

### Features:

- Die cast aluminum housing with corrosion resistant polyester powder coat finish
- Shatter resistant UL stabilized polycarbonate lens
- Integral 4kV Surge Protection + 10kA stand alone surge protection standard
- Choice between Canopy and Parking Lens

### Factory Installed Controls Options:

- Multifunctional Occupancy + Photocell Motion Sensor
- Standard Photocell

## Ordering Structure

FAMILY	WATTAGE (NOMINAL)	VOLTAGE	DISTRIBUTION	-	CCT	COLOR	OPTIONS
CP= Value Canopy/ Parking	20= 20W 30= 30W 45= 45W 55= 55W	U= 120-277V	C= Canopy P= Parking	-	40= 4000K 50= 5000K	B= Dark Bronze  <i>Some white in stock. Contact MaxLite for additional finishes</i>	MS= Motion Sensor <sup>1</sup> PC= Photocell
	70=70W				CS= CCT Select 3/4/5K, 70W only		
	100=100W/80W/60W				WCS= Wattage & CCT Selectable 3K/4K/5K, 100W only		

<sup>1</sup> Remote control available (RMRC-100) - sold separately

## Accessories (SOLD SEPARATELY)

ORDER CODE	MODEL NUMBER	DESCRIPTION	IMAGE
104799	RMRC-100	REMOTE CONTROL FOR MS OPTION, MINIMUM 1 PER PROJECT TO PROGRAM	
111294	EM2-REMOTE-MT	FIELD INSTALLABLE REMOTE MOUNT -20°C BATTERY BACKUP FOR 20-70W ONLY <b>(NOT COMPATIBLE WITH 100W)</b>	



**5-year standard warranty** (further details available at [www.maxlite.com/warranties](http://www.maxlite.com/warranties))

# Value Canopy/Parking Fixture

CP Series

## Stocked Items

ORDER CODE	MODEL NUMBER	WATTAGE
110641	CP20UP-50B	20W
110643	CP30UP-50B	30W
110645	CP45UP-50B	45W
110647	CP55UP-50B	55W
110692	CP55UP-50W	55W
110693	CP70UC-CSB	70W
110694	CP100UC-WCSB	100W

## Specifications

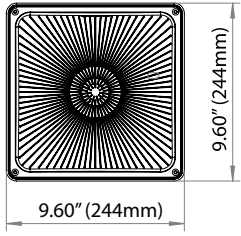
		CP20	CP30	CP45	CP55	CP70	CP100 <sup>1</sup>
Nominal Wattage (W)*		20W	30W	45W	55W	70W	100W <sup>1</sup>
Lumens Delivered (lm)	Parking*	3,000	4,350	6,430	6,900	9,560-10,200	12,680-13,490
Lumens Delivered (lm)	Canopy*	3,100	4,530	6,170	7,150	9,610-10,330	13,370-14,330
Nominal Efficacy (lm/W)	Parking*	150lm/W	145lm/W	143lm/W	125lm/W	137-146lm/W	127-135lm/W
Nominal Efficacy (lm/W)	Canopy*	155lm/W	151lm/W	137lm/W	130lm/W	137-148lm/W	134-143lm/W
Battery Backup Min. Lumen Output	Parking	With EM2-REMOTE-MT - 1,000 lumens					
	Canopy	With EM2-REMOTE-MT - 1,040 lumens					
CRI		≥70					
Color Temperature (K)		Dedicated 4000K or 5000K				Selectable 3/4/5K	
Input Voltage		120-277V AC					
Surge Protection		4kV integral + 10kA stand alone					
Dimming		0-10V dimming capability					
Controls		On/Off photocell or programmable motion sensor with photocell available as factory installed option					
Lumen Maintenance (L70) hrs		50,000 Hrs					
Housing		Die cast aluminum with corrosion resistant polyester powder coat					
Lens		Shatter resistant, UV stabilized polycarbonate					
Mounting		Metal plate with hinge to hold fixture for wiring					
Operating Temperature		-4°F to 104°F (-20°C to 40°C)					
Weight		5.5lbs/2.5kg			5.75lbs/2.6kg		6.7lbs/3kg
Listings		Ulus, FCC, RoHS					
Environment		IP65					
Warranty		5 Years					

\* Varies depending on CCT, consult IES files for exact measurements

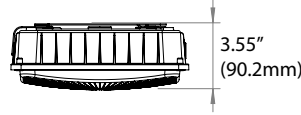
<sup>1</sup> Fixture are set at highest wattage and 5000K

# Value Canopy/Parking Fixture CP Series

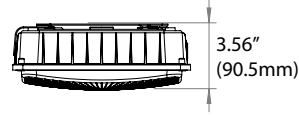
### Dimensions



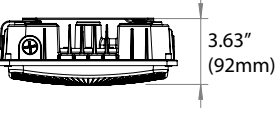
**20-55W CANOPY**



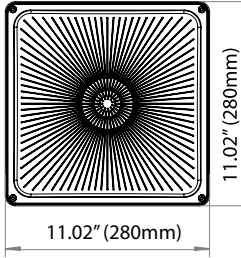
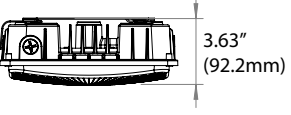
**20-55W PARKING**



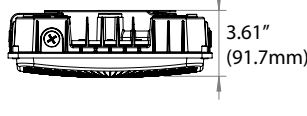
**70W CANOPY**



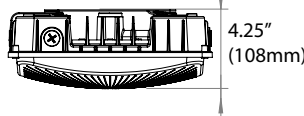
**70W PARKING**



**100W CANOPY**



**100W PARKING**



### DLC 5.1 Chart

MODEL #	PRODUCT ID	GENERAL APPLICATION	PRIMARY USE DESIGNATION
CP20UC-40[ALL OPTIONS]	S-K5BSHP	Low Output	Fuel Pump Canopy Luminaires
CP20UC-50[ALL OPTIONS]	S-P6WDBB	Low Output	Fuel Pump Canopy Luminaires
CP30UC-40[ALL OPTIONS]	S-PKH5J8	Low Output	Fuel Pump Canopy Luminaires
CP30UC-50[ALL OPTIONS]	S-NP10TM	Low Output	Fuel Pump Canopy Luminaires
CP45UC-40[ALL OPTIONS]	S-KYKVYC	Mid Output	Fuel Pump Canopy Luminaires
CP45UC-50[ALL OPTIONS]	S-5HCBMN	Mid Output	Fuel Pump Canopy Luminaires
CP55UC-40[ALL OPTIONS]	S-DFC0RZ	Mid Output	Fuel Pump Canopy Luminaires
CP55UC-50[ALL OPTIONS]	S-M3BV6M	Mid Output	Fuel Pump Canopy Luminaires
CP70UC-CS[ALL OPTIONS]	S-DSPZG4	Mid Output	Fuel Pump Canopy Luminaires
CP100UC-WCS[ALL OPTIONS]	S-NHNJGJ	High Output	Fuel Pump Canopy Luminaires
CP20UP-40[ALL OPTIONS]	S-3FPH76	Low Output	Parking Garage Luminaires
CP20UP-50[ALL OPTIONS]	S-S7L6JN	Low Output	Parking Garage Luminaires
CP30UP-40[ALL OPTIONS]	S-CSWDDT	Low Output	Parking Garage Luminaires
CP30UP-50[ALL OPTIONS]	S-H6NRC	Low Output	Parking Garage Luminaires
CP45UP-40[ALL OPTIONS]	S-V2FRN5	Mid Output	Parking Garage Luminaires
CP45UP-50[ALL OPTIONS]	S-WB42XG	Mid Output	Parking Garage Luminaires
CP55UP-40[ALL OPTIONS]	S-7CNXMC	Mid Output	Parking Garage Luminaires
CP55UP-50[ALL OPTIONS]	S-32F7DZ	Mid Output	Parking Garage Luminaires
CP70UP-CS[ALL OPTIONS]	S-N2SJW2	Mid Output	Parking Garage Luminaires
CP100UP-WCS[ALL OPTIONS]	S-29SD99	High Output	Parking Garage Luminaires

# Value Canopy/Parking Fixture CP Series

## ISOFOOTCANDLE:

Each gridline represents one mounting height.

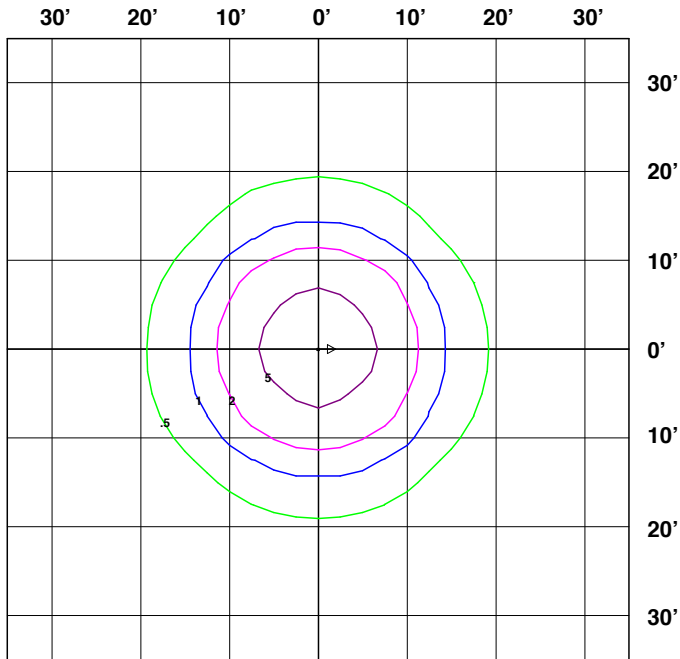
For mounting heights other than noted multiply FC by the below factor.

$$\frac{(\text{Chart's Mtg Height})^2}{(\text{Actual Mtg Height})^2}$$

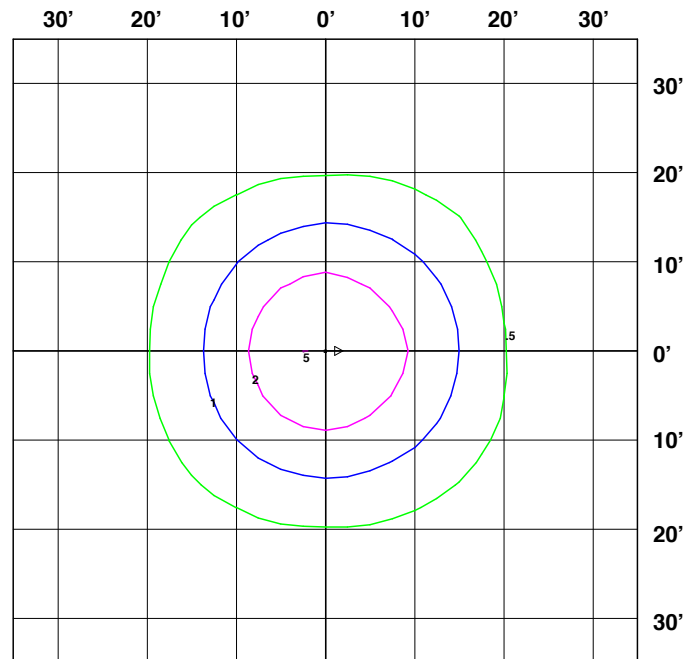
### LEGEND

- 0.5 fc
- 1 fc
- 2 fc
- 5 fc
- 10 fc
- 20 fc

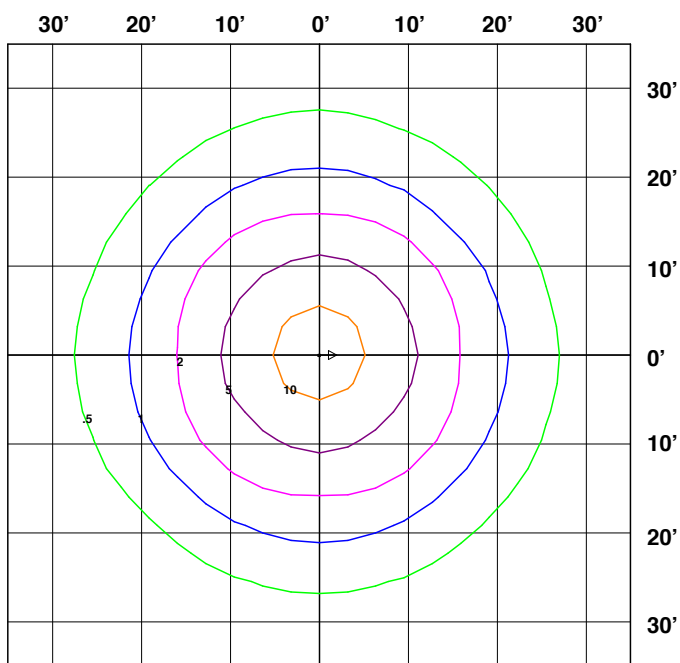
20W CANOPY 12'



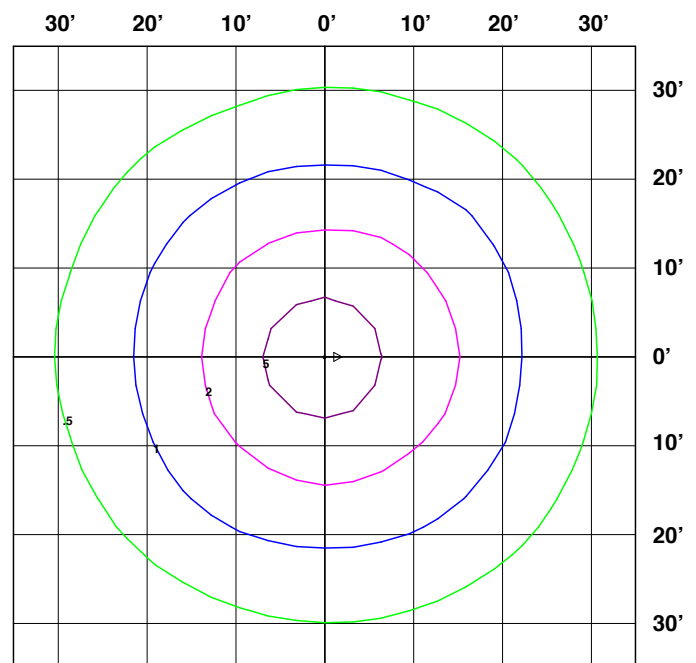
20W PARKING 12'



55W CANOPY 15'



55W PARKING 15'



## Value Canopy/Parking Fixture CP Series

### ISOFOOTCANDLE:

Each gridline represents one mounting height.

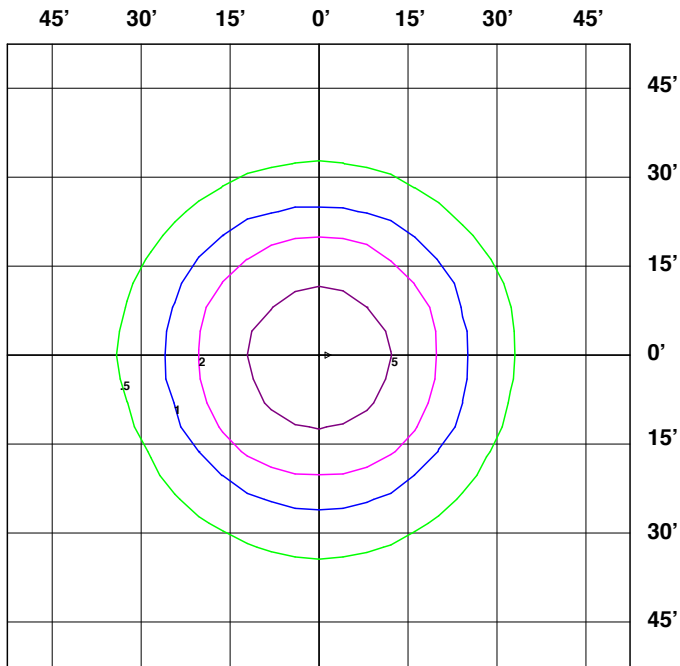
For mounting heights other than noted multiply FC by the below factor.

$$\frac{(\text{Chart's Mtg Height})^2}{(\text{Actual Mtg Height})^2}$$

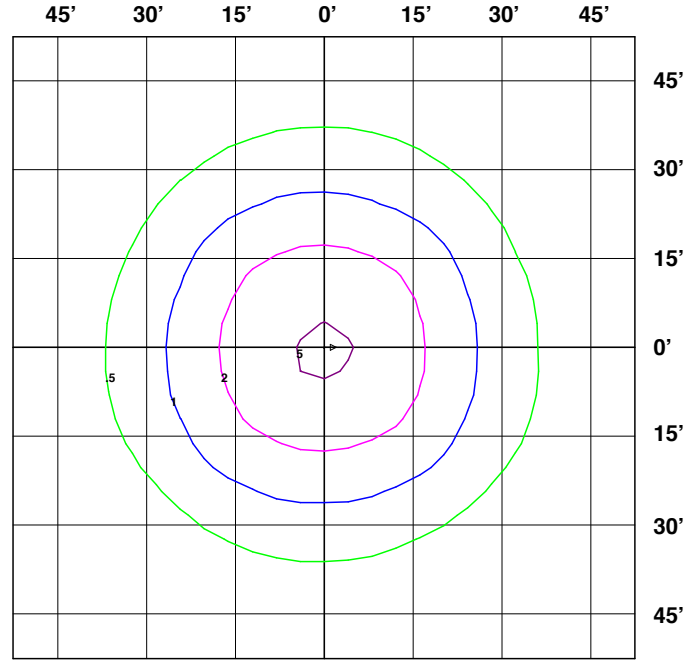
#### LEGEND

- 0.5 fc
- 1 fc
- 2 fc
- 5 fc
- 10 fc
- 20 fc

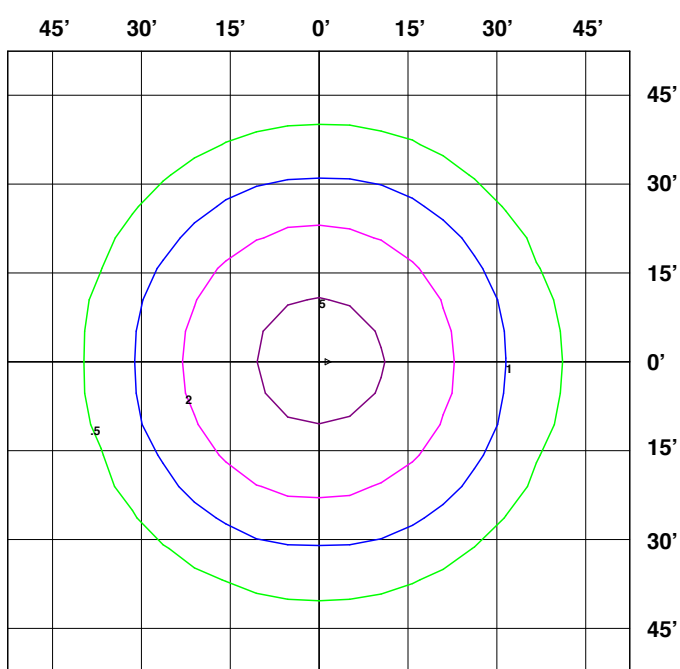
70W CANOPY 20'



70W PARKING 20'



100W CANOPY 25'



100W PARKING 25'

