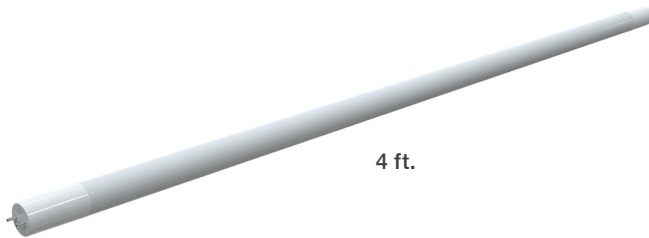


PROJECT NAME: _____ CAT. #: _____
 NOTES: _____ FIXTURE SCHEDULE: _____

4 FT. LED DIRECT FIT T8 TUBES

UL TYPE-A Series



PRODUCT DESCRIPTION:

MaxLite DirectFit LED T8 lamp is the ideal plug and play solution that works straight out of the box. Designed to deliver between 1740- 2200 lumens, these energy-saving LED lamps are quick, easy and safe to install into existing linear fluorescent fixtures without any extra effort or re-wiring. MaxLite DirectFit LED T8 lamps utilize the existing fluorescent electronic T8 ballast, thus minimizing maintenance and labor costs. Tested to NSF Standards, and are suitable for use in an environment where food intended for human consumption is produced.

FEATURES:

Compatible with most electronic instant-start and programmed rapid start T8 ballasts, emergency ballast, and dimming ballasts. See ballast compatibility chart.

- THD: <20%
- UV Free
- Dimmable (ballast dependent)
- Not for use with T12 magnetic or electronic ballasts
- Not for use with T8 magnetic or HO ballasts
- Not for use or to be wired to "mains voltage"

Ordering Information

FAMILY	WATTAGE	LAMP TYPE	OPERATION	LENGTH	COLOR TEMPERATURE	CONSTRUCTION
L = Linear Tube	9.5 = 9.5W	T8 = T8 Tube	DF= Direct Fit	4 = 4ft	35 = 3500K 40 = 4000K 50 = 5000K	-CG2 - Inner Coated Glass Gen 2
	11 = 11W 14 = 14W					-CG - Inner Coated Glass

Stocked Items

ORDER CODE	MODEL NUMBER	DLC PRODUCT ID	DLC CLASSIFICATION	DLC PRIMARY USE
111710	L9.5T8DF440-CG2	S-90RQTH	Standard	Replacement Lamps (Plug and Play) (UL Type A)
111711	L9.5T8DF450-CG2	S-VYYRTZ		
111703	L11T8DF435-CG	S-N7WSM7		
111704	L11T8DF440-CG	S-ZVJRWL		
111705	L11T8DF450-CG	S-LGBZ11		
111706	L14T8DF435-CG	S-QDP75V		
111707	L14T8DF440-CG	S-FHD83C		
111708	L14T8DF450-CG	S-8Q8W2W		



5-year standard warranty (further details available at www.maxlite.com/warranties)

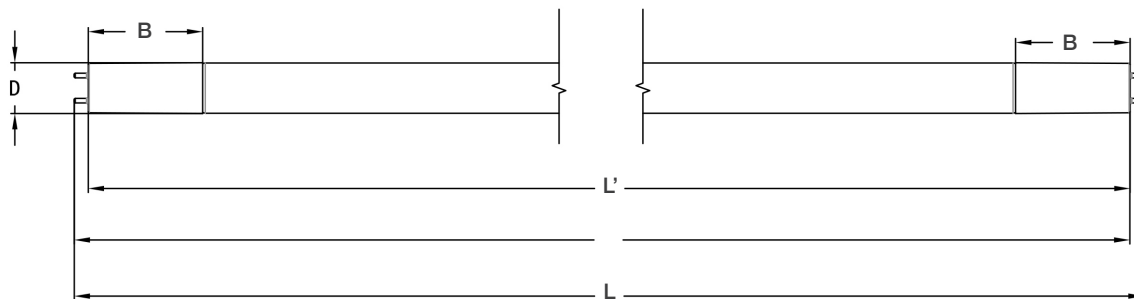
4 FT. LED DIRECT FIT T8 TUBES

UL TYPE-A Series

Specifications	L9.5T8DF4xx-CG2	L11T8DF4xx-CG	L14T8DF4xx-CG
Length	4 ft.		
Base	G13		
Bare Lamp Wattage (W)	9.5W	11W	14W
Lumens Delivered (lm)	1740 lm	1800 lm	2200 lm
Nominal Efficacy (lm/W)	151 lm/W	138 lm/W	138 lm/W
Color Temperature (K)	3500K, 4000K, 5000K		
CRI	≥ 80		
Calculated L70 Lumen Maintenance	≥ 50,000 hours		
Dimming Technology	Ballast Dependent		
Dimming Range	10-100%, dependent on ballast		
Input Voltage	120-277V AC, 50/60 Hz		
Power Factor	≥ 0.9		
Diffuser	Inner Coated Glass		
Beam Angle	210°		
Operating Temperature	-4°F to 113°F (-20°C to 45°C)		
Certifications	cULus listed, FCC, Rohs Complaint, NSF/ANSI 2 - Food Equipment		
Qualifications	DLC Standard		
Environment	Damp Locations. Enclosed Luminaires		
Warranty	5 Years warranty. Check maxlite.com/warranties for details		
Case Quantity	25 pcs		

Product Dimensions

PRODUCT	L	L'	B	D
L9.5T8DF4xx-CG2	47.7 in	47.2 in	0.5 in	0.98 in
L11T8DF4xx-CG				
L14T8DF4xx-CG				



FCC Statement

NOTE: This equipment has been tested and found to comply with the limits for a class B digital device, pursuant to Part 15 of the FCC Rules. These limits are designed to provide reasonable protection against harmful interference in a residential installation. This equipment generated, used, and can radiate radio frequency energy and, if not installed and used in accordance with the instructions, may cause harmful interference to radio communications. However, there is no guarantee that interference will not occur in a particular installation.

If this equipment does cause harmful interference to radio or television reception which can be determined by turning the equipment off and on, the user is encouraged to try to correct the interference by one or more of the following measures:

- Reorient or relocate the receiving antenna
- Increase the separation between the equipment and receiver
- Connect the equipment to an outlet on a circuit different from that to which the receiver is connected
- Consult the dealer or an experienced radio/TV technician for help

4 FT. LED DIRECT FIT T8 TUBES

UL TYPE-A Series

Compatible Ballasts List

Manufacturer	Model Number	Start Method	Number of Lamps	Ballast Factor	Lamp Connection	Enclosed Fixtures	Less than Max Number of Lamps			Max Number of Lamps		
							120Vac	277Vac	347Vac	120Vac	277Vac	347Vac
Act	ACT 2P32ISUNVE	IS	2	N	Parallel	YES	C	C	NA	C	C	NA
Antron Electronics	A32T8MICLO	IS	2	L	Parallel	YES	C	C	NA	C	C	NA
Arcata	ACT 3P32ISUNVLE	IS	3	L	Parallel	YES	C	C	NA	C	C	NA
Cooper Lighting	CL-432ISUNV-R1-B	IS	4	H	Parallel	NO	C	C	NA	C	C	NA
Eiko	PM-2X32T8-UNV-IS-L	IS	2	L	Parallel	YES	C	C	NA	C	C	NA
	PM-2X32T8-UNV-IS		2	N	Parallel	YES	C	C	NA	C	C	NA
Eспен	VE232MVHIPL	IS	2	L	Parallel	YES	C	C	NA	C	C	NA
	VE232MVHIPE		2	N	Parallel	YES	C	C	NA	C	C	NA
Fusion	FB432347E-N	IS	4	N	Parallel	YES	NA	NA	C	NA	NA	C
	FB432MVE-N		4	N	Parallel	YES	C	C	NA	C	C	NA
	FB232347E-N		2	N	Parallel	YES	NA	NA	C	NA	NA	C
	FB232MVE-N		2	N	Parallel	YES	C	C	NA	C	C	NA
General Electric	GE432MAX-H/ULTRA	IS	4	H	Parallel	NO	C	C	NA	C	C	NA
	GE432MAX-L/ULTRA		4	L	Parallel	YES	C	C	NA	C	C	NA
	GE432-120-RES		4	N	Parallel	YES	C	NA	NA	C	NA	NA
	GE432MAX347-N		4	N	Parallel	YES	NA	NA	C	NA	NA	C
	GE432MAX-G-N		4	N	Parallel	YES	C	C	NA	C	C	NA
	GE432MAX-N/ULTRA		4	N	Parallel	YES	C	C	NA	C	C	NA
	GE332MAX-L/ULTRA		3	L	Parallel	YES	C	P	NA	C	P	NA
	GE332MAXP-L/ULTRA		3	L	Parallel	YES	C	C	NA	C	C	NA
	GE332MAX-G-N		3	N	Parallel	YES	C	P	NA	C	C	NA
	GE332MAX-N/ULTRA		3	N	Parallel	YES	C	P	NA	C	C	NA
	GE332MV-N		3	N	Parallel	YES	C	P	NA	C	P	NA
	GE232MAX-G-N		2	N	Parallel	YES	C	C	NA	C	C	NA
	GE232MAX-N/ULTRA		2	N	Parallel	YES	C	C	NA	C	C	NA
	GE-232-MV-N		2	N	Parallel	YES	C	C	NA	C	C	NA
	GE232MV-N-DIY		2	N	Parallel	YES	C	C	NA	C	C	NA
	GE132MAXP-N/ULTRA	1	N	NA	YES	NA	NA	NA	C	C	NA	
GE-232-MV-PS-N	PS	2	N	Parallel	YES	C	C	NA	C	C	NA	
Halco	EP432IS/L/MV/HE	IS	4	L	Parallel	YES	C	C	NA	C	C	NA
	EP432IS/120/MC		4	N	Parallel	YES	C	C	NA	C	C	NA
	EP332IS/L/MV/HE		3	L	Parallel	YES	C	C	NA	C	C	NA
	EP332IS/MV/HE		3	N	Parallel	YES	C	C	NA	C	C	NA
	EP232IS/L/MV/HE		2	L	Parallel	YES	C	C	NA	C	C	NA
	EP232IS/MV/HE		2	N	Parallel	YES	C	C	NA	C	C	NA
Hatch	HL432BIS/UV/HE/W	IS	4	N	Parallel	YES	C	P	NA	C	C	NA
	HL232BIS/UV/HE/W		2	N	Parallel	YES	C	C	NA	C	C	NA

4 FT. LED DIRECT FIT T8 TUBES

UL TYPE-A Series

Compatible Ballasts List

Manufacturer	Model Number	Start Method	Number of Lamps	Ballast Factor	Lamp Connection	Enclosed Fixtures	Less than Max Number of Lamps			Max Number of Lamps		
							120Vac	277Vac	347Vac	120Vac	277Vac	347Vac
Howard Industries	EPL4/32IS/MV/MC/HE	IS	4	L	Parallel	YES	C	C	NA	C	C	NA
	EP4/32IS/MV/MC/HE		4	N	Parallel	YES	C	C	NA	C	C	NA
	EPL3/32IS/MV/SC/HE		3	L	Parallel	YES	C	C	NA	C	C	NA
	EP332ISMVMC/HE		3	N	Parallel	YES	C	C	NA	C	C	NA
	EP3/32IS/MV/SC/HE		3	N	Parallel	YES	C	C	NA	C	C	NA
	EPH3/32IS/MV/MC/HE		3	N	Parallel	YES	C	P	NA	C	P	NA
	EPL2/32IS/MV/MC/HE		2	L	Parallel	YES	C	P,T	NA	C	P	NA
	E2/32IS-120MC		2	N	Parallel	YES	P,T	NA	NA	P,T	NA	NA
	EP2/32IS/MV/MC/HE		2	N	Parallel	YES	C	C	NA	C	C	NA
	EP4/32PPRS/MV/SC/HE	PRS	4	N	Parallel	YES	C	C	NA	C	C	NA
Keystone	KTEB-432RIS-1-TP-SL	IS	4	N	Parallel	YES	C	NA	NA	C	NA	NA
	KTEB-332-UV-IS-N-P		3	N	Parallel	YES	C	C	NA	C	C	NA
	KTEB-232LBF-1-TP-PIC-EV		2	N	Parallel	YES	C	NA	NA	C	NA	NA
	KTEB-432-UV-PS-N-P	PS	4	N	Parallel	YES	C	C	NA	C	C	NA
	KTEB-232-UV-PS-L-P	2	L	Parallel	YES	C	C	NA	C	C	NA	
Lighting Products Limited	EB-332EBF-UV-TP-HE	IS	3	L	Parallel	YES	C	C	NA	C	C	NA
Osram Sylvania	QHE 2x32T8/347 PSN-SC	PRS	2	N	Parallel	YES	NA	NA	C	NA	NA	C
	QHE 4X32T8/UNV ISL-SC	IS	4	L	Parallel	YES	C	C	NA	C	C	NA
	QHE 4X32T8/UNV ISN-SC		4	N	Parallel	YES	C	C	NA	C	C	NA
	QHE 3X32T8/UNV ISL-SC		3	L	Parallel	YES	C	C	NA	C	C	NA
	QHE 3X32T8/UNV ISN-SC		3	N	Parallel	YES	C	C	NA	C	C	NA
	QTP 3X32T8/UNV ISN-SC		3	N	Parallel	YES	C	C	NA	C	C	NA
	QT 2x32/347 ISH-SC		2	H	Parallel	NO	NA	NA	NA	NA	NA	C
	QHE 2X32T8/UNV ISL-SC		2	L	Parallel	YES	C	C	NA	C	C	NA
	QTP 2X32T8/UNV ISL-SC		2	L	Parallel	YES	C	C	NA	C	C	NA
	QTP2x32T8/277 ISN-D		2	L	Parallel	YES	NA	C	NA	NA	C	NA
	QHE 2X32T8/UNV ISN-SC		2	N	Parallel	YES	C	C	NA	C	C	NA
	QTP 2X32T8/UNV ISN-SC		2	N	Parallel	YES	C	C	NA	C	C	NA
	QHE 1X32T8/UNV ISH-SC		1	L	NA	YES	NA	NA	NA	C	C	NA
	QHE 1X32T8/UNV ISL-SC		1	L	NA	YES	NA	NA	NA	C	C	NA
	QHE 1X32T8/UNV ISN-SC		1	N	NA	YES	NA	NA	NA	C	C	NA
	QHE 4X32T8/UNV PSN-SC		PRS	4	N	Parallel	YES	C	C	NA	C	C
	QHE 2X32T8/UNV PSH-HT	2	H	Parallel	NO	NA	NA	NA	C	C	NA	
	QHE 2X32T8/UNV PSN-MC	2	N	Parallel	YES	C	C	NA	C	C	NA	
Pacific Fluorescent	EB-232IS-120-RES	IS	2	N	Parallel	YES	C	NA	NA	C	NA	NA

4 FT. LED DIRECT FIT T8 TUBES

UL TYPE-A Series

Compatible Ballasts List

Manufacturer	Model Number	Start Method	Number of Lamps	Ballast Factor	Lamp Connection	Enclosed Fixtures	Less than Max Number of Lamps			Max Number of Lamps		
							120Vac	277Vac	347Vac	120Vac	277Vac	347Vac
Philips-Advance	IOP-4P32-LW-N	IS	4	L	Parallel	YES	C	C	NA	C	C	NA
	IOP-4P32-N		4	N	Parallel	YES	C	C	NA	C	C	NA
	IOPA-4P32-SC		4	N	Parallel	YES	C	C	NA	C	C	NA
	REB-4P32-SC		4	N	Parallel	YES	C	NA	NA	C	NA	NA
	ICN-3P32-SC		3	N	Parallel	YES	C	C	NA	C	C	NA
	VEL-3P32-SC		3	N	Parallel	YES	C	C	NA	C	C	NA
	IOP-2P32-LW-N		2	L	Parallel	YES	C	C	NA	C	C	NA
	IOPA-2P32-LW-N		2	L	Parallel	YES	C	C	NA	C	C	NA
	IOPA-2P32-N		2	N	Parallel	YES	C	C	NA	C	C	NA
	VEL-2P32-SC		2	N	Parallel	YES	NA	P,T	NA	NA	C	NA
	IOP-1P32-LW-N		1	L	NA	YES	NA	NA	NA	C	P	NA
	IOP-1P32-LW-SC		1	L	NA	YES	NA	NA	NA	C	C	NA
	ICN-132-MC		1	N	NA	YES	NA	NA	NA	C	P	NA
	IOP-1P32-N		1	N	NA	YES	NA	NA	NA	C	P	NA
	IOP-1P32-SC		1	N	NA	YES	NA	NA	NA	C	C	NA
	IOP-4PSP32-LW-SC		PS	4	L	Parallel	YES	C	C	NA	C	C
	IOP-4PSP32-SC	4		N	Parallel	YES	C	C	NA	C	C	NA
	IOP-3PSP32-SC	3		N	Parallel	YES	NA	NA	NA	C	C	NA
Plusrite	BAF432IS/MV/L	IS	4	L	Parallel	YES	C	C	NA	C	C	NA
	BAF432IS/MV		4	N	Parallel	YES	C	C	NA	C	C	NA
	BAF332IS/MV/L		3	L	Parallel	YES	C	C	NA	C	C	NA
	BAF332IS/MV		3	N	Parallel	YES	C	C	NA	C	C	NA
	BAF232IS/MV		2	N	Parallel	YES	C	C	NA	C	C	NA
Prolume	E432IS/120/R/SL	IS	4	N	Parallel	YES	C	NA	NA	C	NA	NA
	EP232IS/L/MV/SL		2	L	Parallel	YES	C	C	NA	C	C	NA
Sola	E-758-U-232-MC	IS	2	N	Parallel	YES	C	P	NA	C	C	NA
Sunpark	U-4/32ISE-LBF	IS	4	L	Parallel	YES	C	C	NA	C	C	NA
	U-4/32IS HP,F		4	N	Parallel	YES	C	C	NA	C	C	NA
	120-3/32IS MPF		3	N	Parallel	YES	C	NA	NA	C	NA	NA
	U-3/32ISE		3	N	Parallel	YES	C	C	NA	C	C	NA
	U-2/32ISE-LBF		2	L	Parallel	YES	C	C	NA	C	C	NA
	120-1/32IS HPF		1	N	NA	YES	NA	NA	NA	P,T	NA	NA
	U-1/32PSE	PS	1	N	NA	YES	NA	NA	NA	C	C	NA
	SL15T	RS	2	N	Parallel	YES	NA	NA	NA	P,T	NA	NA
Superior Life	70211	PS	4	N	Parallel	YES	C	C	NA	C	C	NA
	70210		2	N	Parallel	YES	C	C	NA	C	C	NA
Sylvania	QT 3x32/277 IS	IS	3	N	Parallel	YES	C	C	NA	C	C	NA
TCP	E4P32ISUNVE	IS	4	N	Parallel	YES	C	C	NA	C	C	NA
	E3P32ISUNVE		3	N	Parallel	YES	C	C	NA	C	C	NA

4 FT. LED DIRECT FIT T8 TUBES

UL TYPE-A Series

Compatible Ballasts List

Manufacturer	Model Number	Start Method	Number of Lamps	Ballast Factor	Lamp Connection	Enclosed Fixtures	Less than Max Number of Lamps			Max Number of Lamps			
							120Vac	277Vac	347Vac	120Vac	277Vac	347Vac	
Universal Lighting Technologies	B432IUNVHEH-E	IS	4	H	Parallel	NO	C	C	NA	C	C	NA	
	B432IUNVHE L-A		4	L	Parallel	YES	C	C	NA	C	C	NA	
	B432I347HE-A		4	N	Parallel	YES	NA	NA	C	NA	NA	C	
	B432IUNVHE-A		4	N	Parallel	YES	C	C	NA	C	C	NA	
	B432IUNVHP-A		4	N	Parallel	YES	C	C	NA	C	C	NA	
	B332IUNVHP-A		3	N	Parallel	YES	C	C	NA	C	C	NA	
	B232I277RH-A		2	H	Parallel	NO	NA	P,T	NA	NA	C	NA	
	B232IUNVEL-A		2	L	Parallel	YES	C	C	NA	C	C	NA	
	B232I120RES-A		2	N	Parallel	YES	C	NA	NA	C	NA	NA	
	B232IUNVHP-B		2	N	Parallel	YES	C	C	NA	C	C	NA	
	B232IUNVHP-N		2	N	Parallel	YES	C	C	NA	C	C	NA	
	B233IUNVHE-A		2	N	Parallel	YES	C	C	NA	C	C	NA	
	B132IUNVEL-A		1	L	NA	YES	NA	NA	NA	C	C	NA	
	B432PUNVHE-A		PS	4	N	Parallel	YES	C	C	NA	C	C	NA
	B332PUNVHE-A			3	N	Parallel	YES	C	C	NA	C	C	NA
B232PUNVHE-B	2	N		Parallel	YES	C	C	NA	C	C	NA		
Watran	DB-432L-MV-TP-HE	IS	4	L	Parallel	YES	C	C	NA	C	C	NA	
	DB-432N-MV-TP-HE		4	N	Parallel	YES	C	C	NA	C	C	NA	
	DB-332N-MV-TP-HE		3	N	Parallel	YES	C	C	NA	C	C	NA	
	DB-232N-MV-TP-HE		2	N	Parallel	YES	C	C	NA	C	C	NA	
	DB-232N-MV-TP-HESC		2	N	Parallel	YES	C	C	NA	C	C	NA	
Work Horse	WHSG4-UNV-T8-IS	IS	4	N	Parallel	YES	C	C	NA	C	C	NA	
	WHSG3-UNV-T8-IS		3	N	Parallel	YES	C	C	NA	C	C	NA	

Compatible Dimming Ballasts List

Manufacturer	Model #	Start Method	Number of Lamps	Ballast Factor	N-1 Lamp	N Lamp
General Electric	GE132MVPSN-V03	DPS	1	N	/	14%
Keystone	KTLD-2T8LED-UV-IS-VDIM		2		16.4%	16.1%

4 FT. LED DIRECT FIT T8 TUBES

UL TYPE-A Series

Compatible Emergency Ballasts List

Manufacturer	Model #	Start Method	Number of Lamps	Max Number of Lamps
Bodine	B50	AC	2	C
Espan	VEM1300DV(L)		1	C
	VEM500DV(L)		1	C
Exitronix	XEB-7-B-LM		1	C
Keystone	KT-EMRG-1300-T5		1	C
Tamlite	BAL1400LPACTD		1	C

Legend

Denoted by	Explanation
/	Not tested
C	Compatible
NA	Not applicable
P	PF<85
T	THD >30%