

PROJECT NAME: _____ CAT. #: _____
 NOTES: _____ FIXTURE SCHEDULE: _____

C-MAX EASYRF™ REMOTE CONTROL



RF-Remote

(Requires at least one RF-Remote per project for commissioning)

EasyRF Overview:

EasyRF is a room-based wireless lighting control system designed for effortless integration of luminaire-level lighting controls (LLLC) in both new construction and retrofit projects. As part of the versatile and multi-tiered c-Max Lighting controls platform, EasyRF simplifies commissioning by enabling groupable wireless controls without the need for a mobile app or gateway. Compliant with energy codes and budget-friendly, EasyRF provides an effortless solution for your lighting control needs for any small to medium size projects.

Features:

- Groupable Wireless Controls: Sensors can be zoned and grouped with ease. Includes many functional features typically available with Network controls
- Simple “Plug-and-Play” Connection - Easy to install in the field with pre-installed USB-C
- Easy commissioning: Quick setup with an hand-held remote on-screen display with no need for mobile apps or complex software
- Bi-directional communication: Easily Read and Write sensor settings. IR transmission range up to 50 feet between remote and sensor
- Granular dimming: Precisely control light levels in 1% increment. Ability to customize fade time for better dimming transitions
- Zoning : Customize channels and floors for multi-floor fit-outs. Up to 50 channels and 8 floors with capability to group up to 50 devices per channel
- Network : Sub-GHz RF system with ability for signals to travel longer distances. Up to 250 feet node-to-node communication range (line of sight)
- Set motion sensor settings, including bi-level dimming, high trim, low trim, daylight harvesting, daylight trim, floors, channels and repeater functionality
- Extend coverage by configuring sensor as a repeater ensuring robust network performance
- Versatile operation mode: Supports both occupancy and vacancy modes with ability to create a daylight zone within a zone
- 5 Year Warranty

Ordering Information

MODEL NUMBER	DESCRIPTION	UPC	ORDER CODE
RF-REMOTE	EASYRF REMOTE CONTROL COMMISSIONING TOOL	767627056673	110962



5-year standard warranty (further details available at www.maxlite.com/warranties)

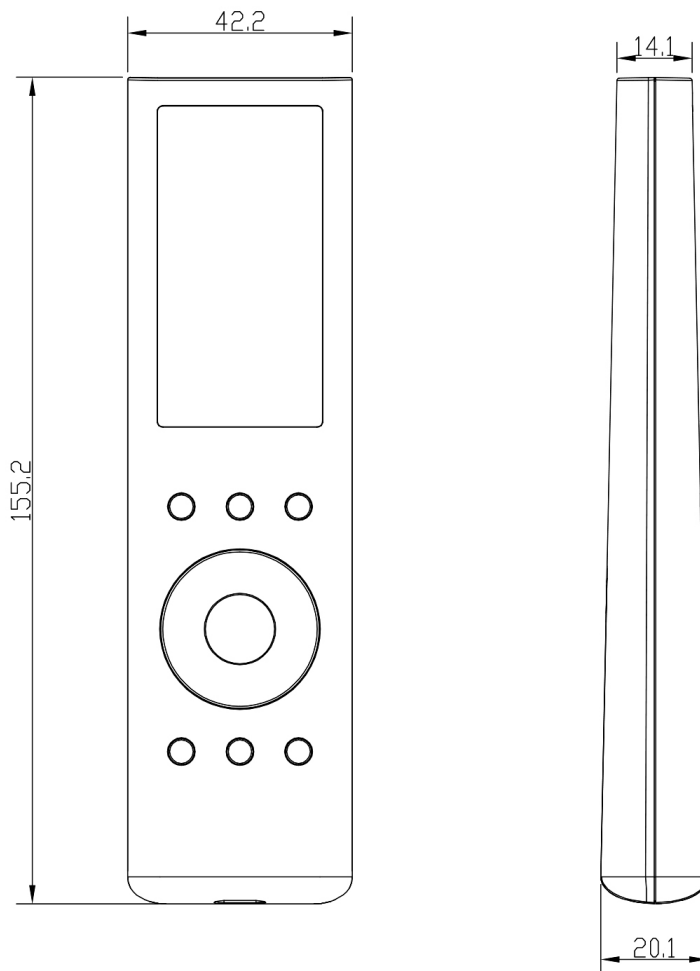
C-MAX EASYRF™ REMOTE CONTROL

Specifications

Specifications	RF-REMOTE
POWER SUPPLY	2x AAA Batteries
COMMUNICATION	IR
COMMUNICATION RANGE	Up to 50ft*
OPERATING TEMPERATURE	32°F TO 104°F / 0°C to 40°C
DIMENSIONS	155.2mm x 42.2mm x 20.1mm
COLOR	BLACK

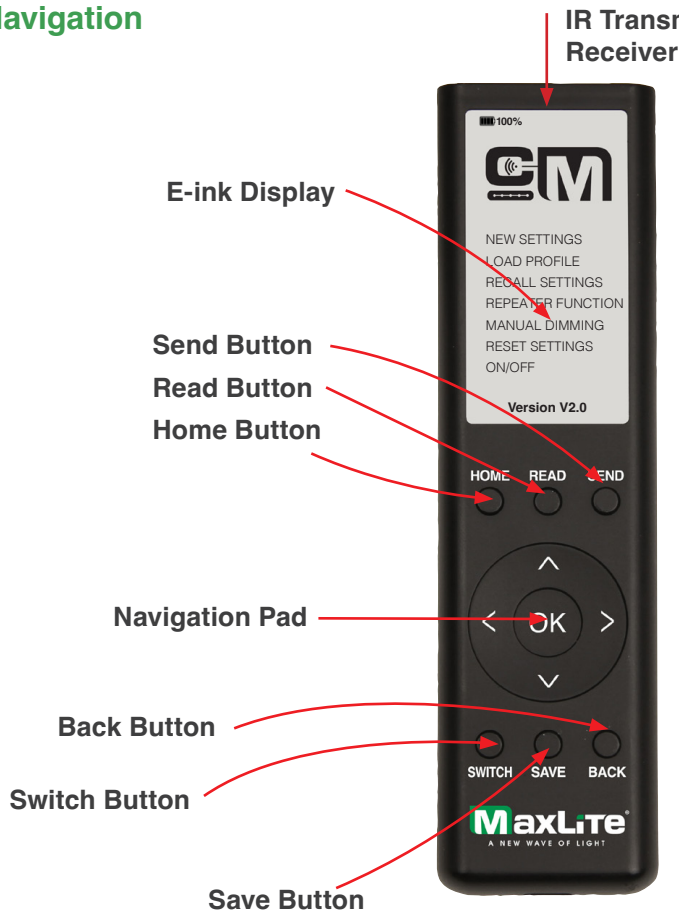
* IR commissioning range may be impacted due to lighting environment

Product Dimensions



C-MAX EASYRF™ REMOTE CONTROL

Navigation



- **NEW SETTINGS:** Enable you to choose various sensor parameters, such as High Mode, Hold Time, Standby Dimming Level, Standby Time, Sensitivity Detection Range, Daylight Threshold, Continuous Adjustment Mode, Ramp Up/Down, and RF Channel.
- **LOAD PROFILE:** Lets you select saved parameter profiles, useful for programming multiple sensors with identical settings.
- **RECALL SETTINGS:** Point the remote at a programmed sensor to read its current settings. You can then save this setting as a new profile.
- **REPEATER FUNCTION:** Let's you select a sensor to relay or repeat a message in the channel to extend the range. Note: assigning too many sensors as repeaters will flood the channel which will cause false triggers.
- **MANUAL DIMMING:** Allows you to manually control the light intensity from 0-100%.
- **RESET SETTINGS:** Restores the sensor to its factory defaults.
- **ON/OFF:** Turn an individual light on or off.

C-MAX EASYRF™ REMOTE CONTROL

Definitions and Default Settings

FLOOR: Assign a project as a unique floor with a maximum of 8 floors per location.
Default FLOOR = "A"

CHANNEL: Assign a light to a channel for grouping capabilities with a maximum of 50 channels per floor.
Default CHANNEL = "1"

HIGH: High Trim Mode, set maximum threshold high trim value 50-100% increments of 1%
Default HIGH = "100%"

LOW: Low Trim Mode, set minimum threshold low trim value 1-25% increments of 1%
Default LOW = "10%"

HOLD: Hold Time or 1st time delay time of no occupancy after which fixture goes to standby: 2s / 30s / 1min / 5min / 10min / 15min / 20min / 30min / 60min
Default HOLD = "10min"

SDL: Standby dim level select any standby dim level between 1-100%. Increments of 1%
Default SDL = "50%"

STAND: Standby time or 2nd time delay, choose a standby time or second time delay to set the duration for SDL to maintain.
0s / 10s / 1min / 5min / 10min / 30min / 1hr / ∞ (0s means on/off control, and ∞ means the standby time is infinite)
Default STAND = "50%"

SDR: Sensitivity Detection Range, 10/50/100%
Default SDR = "100%"

VAC: Vacancy Mode, switching motion detection mode between occupancy (Auto ON/Disable) and vacancy (Manual ON/Enable)
Default VAC = "Disabled"

CAM: Continuous Adjustment Mode (Daylight Harvesting), Measure and set feature to allow lights to maintain a light level 26-100% or disabled
Default CAM = "Disabled"

DAY: Daylight Threshold, set a low trim for Daylight 5-25%, increments of 5% or disabled.
Default DAY = "Disabled"

R-UP: Ramp-up time, 0-60 seconds increments of 1 second
Default R-UP = "2s"

R-DOWN: Ramp-down time, 0-60 seconds increments of 1 second
Default R-DOWN = "2s"

LINK: Linkage, synchronize lights in the same channel Enable/Disable
Default = "ENABLE"

Commissioning Guide

Visit www.maxlite.com/cmrx for How-to-Videos and a comprehensive commissioning guide.

