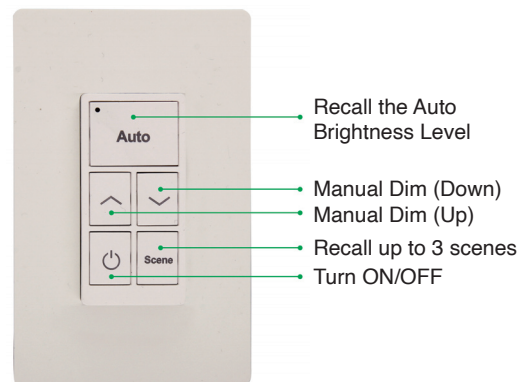


MaxLite® 5 Button Wall Switch / Bluetooth Network Controls



General Safety Information

- To reduce the risk of death, personal injury or property damage from fire, electric shock, falling parts, cuts/abrasions, and other hazards read all warnings and instructions included with and on the fixture box and all fixture labels.
- Before installing, servicing, or performing routine maintenance upon this equipment, follow these general precautions.
- Commercial installation, service and maintenance of luminaires should be performed by a qualified licensed electrician.
- **DO NOT INSTALL DAMAGED PRODUCT!**



Models: WNS5-W

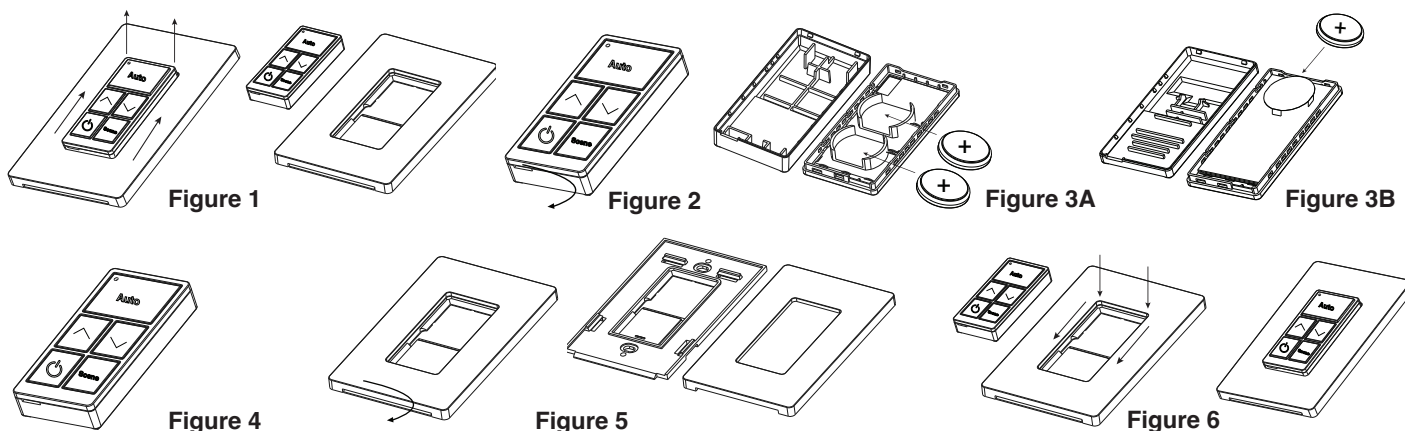
Included in the box:

- A:** 5-button controller with back and front cover plate
- B:** CR2032 battery
- C:** M3.5 19mm Flat head screws with anchors for mounting (2pcs)
- D:** Mounting plate for junction box (for Junction Box mount only)
- E:** #6-32 5/8" Machine screws for junction box mounting (2pcs)

Wall Mount Instructions

1. Remove the 5-button controller from the cover plate by gently pulling it from the top and sliding it up through the slots. **(Figure 1)**
2. Use the slot at the bottom of the 5-button controller to pry open and locate the battery terminal within the enclosure. **(Figure 2)**
3. Depending on the construction of the 5-button controller, insert either 2 CR2032 batteries in the respective terminal **(Figure 3A)** or insert and slide 1 CR2032 battery in the terminal **(Figure 3B)**. Ensure the battery is secured in the contact holder and the positive side of the battery is facing upwards as shown **(Figure 3A & 3B)**.
4. Re-attach the 5-button controller enclosure in place. **(Figure 4)**
5. Pry open the bottom of the cover plate assembly to detach the front cover plate from the back cover plate. **(Figure 5)**
6. Use the screws **(C)** provided or double-sided adhesive tape (not included, sold by others) to mount the back plate on to the wall.
7. Re-attach the front cover plate with the back plate and slide the 5-button controller into the cover plate assembly. Note that the switch controller cannot be attached before assembling the cover plates. **(Figure 6)**

Note: Blue light indicator suggests batteries are in good condition. Flashing Red light indicator suggests battery running low. Replace with CR2032 battery with the correct polarity to avoid product damage.

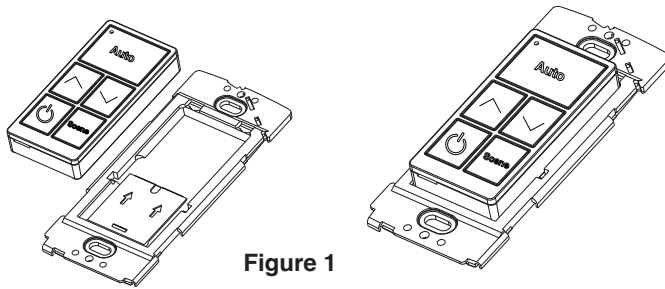


MaxLite® 5 Button Wall Switch / Bluetooth Network Controls



Junction Box Mount Instructions

1. Follow Step 1 through 4 of the wall mount instructions.
2. Use the screws (**E**) to mount the mounting plate for junction box.
3. Slide the 5-button controller into the cover plate. (**Figure 1**)
4. Attach a standard Decora Faceplate (not included.)



Commissioning with c-Max App

Refer to the c-Max Commissioning Guide on www.maxlite.com/cmax

Warranty

MaxLite offers a 5 year warranty on this product, please see: <http://www.maxlite.com/resources/warranties> for more information.