



IES LM-79-08

MEASUREMENT AND TEST REPORT

For

MaxLite Inc.

10 York Ave, West Caldwell, NJ 07006, USA

Test Model: DL615827WH

Report Type:	Electrical and Photometric tests including: Input Current, Power, Power Factor, Luminous Flux, Luminous Efficacy, CRI, CCT, Chromaticity Coordinate, Spectral Power Distribution
Test Engineer:	Hexy He <i>Hexy He</i>
Report Number:	RSZ180614502-10
Test Date:	2018-05-02
Report Date:	2018-06-14
Reviewed By:	Bill Xiong / EE Engineer <i>Bill Xiong</i>
Prepared By:	Bay Area Compliance Laboratories Corp. (Dongguan). No.69,Pulongcun ,Puxinhu Industrial Area, Tangxia , Dongguan, Guangdong, China. Tel: +86-0769-86858888 Fax:+86-0769-86858588
Accreditation:	The IAS Accreditation Number TL-460.

Note: The test data was only valid for the test sample(s). This test report is prepared for the customer shown above and for the device described herein. It may not be duplicated or used in part without prior written consent from Bay Area Compliance Laboratories Corp. (Dongguan). This report is valid only with a valid digital signature. The digital signature may be available only under the Adobe software above version 7.0.

1. Product Description

General Information:

One sample was received on 2018-04-27 and used for testing.

Model Tested:	DL615827WH
Manufacturer:	MaxLite Inc.
Brand Name:	MaxLite
Product Designation:	Ceiling Mount Luminaire
Burning Time Before Test:	0hour(For New Products)

Rated Values:

Rated Voltage/Frequency:	120 V AC 60Hz
Rated Power:	15 W
Nominal CCT:	2700 K
Nominal Lumen Output:	950 lm

Family Declaration:

MaxLite Inc. declares that there are some differences between multiple models and tested model. Details as below:

Tested Model	Multiple Models	Variations	Details
DL615827WH	DL615827%%	Finish color	%% is Finish color, it can be WH = White, NI =Nickel, et cetera.

Note:

1. The applicant MaxLite Inc. declare that their products with model DL615827WH are the same to the products in report#RSZ180427516-10-1 and is authorized by original applicant to use their test data.
2. All the data in previous report (RSZ180427516-10-1) is shared in this report.

2. Standards Used

- IES LM-79-08: Approved Method: Electrical & Photometric Measurement of Solid-state Lighting Products
- ANSI C82.77-10-2014: Harmonic Emission Limits – Related Power Quality Requirements for Lighting
- IES TM-30-15: IES Method for Evaluating Light Source Color Rendition (This method is not in IAS accreditation scope)

3. Description of Test Equipment

Device	Manufacture	Model No	Serial No	Calibration date	Calibration due date
1.5m temperature integrating sphere	SENSING	SPR-600	S09008	2017-07-11	2018-07-11
High-precision rapid spectral analysis system	EVERFINE	HAAS-2000	M112048CA1361 125	2017-07-11	2018-07-11
Digital power meter	YOKOGAWA	WT310	13398	2017-12-14	2018-12-14
Programmable Precision DC Power Supply	ITECH	IT6154	0061 0417 6471 0010 19	2018-03-26	2019-03-26
thermometer	SENSING	NA	NA	2018-03-26	2019-03-26
Standard Light Source	EVERFINE	D204	G100283CA8351 158	2018-01-08	2019-01-08
Precision frequency power supply	ALL Power	APW-105N	970613	2018-03-19	2019-03-19

Statement of Traceability: Bay Area Compliance Laboratories Corp. (Dongguan) attested that all calibration has been performed using suitable standards traceable to National Primary Standards and International System of Units (SI).

4. Test Method

Product was tested with no seasoning. All stabilization and measurements were made in compliance with IES LM-79-08. The product was operated at rated voltage or at voltage required by manufacturer. The ambient temperature of the sample was maintained at $25^{\circ}\text{C}\pm 1^{\circ}\text{C}$ during measurement. And relative humidity is less than 65%.

FINAL

Integrating Sphere System

The system includes AC power source, digital power meter, DC power supply, Spectroradiometer, and integrating sphere. The integrating sphere system is calibrated by standard spectrum light source before measurement.

4 π geometry was used during measurement. The product was operated in its intended orientation in application and was recorded in this report.

The uncertainty of the light output (luminous flux) measurements is U=2.1% (K=2), at the 95% confidence level. The uncertainty of the correlated color temperature measurements is U=25K (K=2), at the 95% confidence level. The uncertainty of the CRI is U=2.1(K=2), at the 95% confidence level.

The uncertainty of power meter AC current U=0.19 % of rdg, AC Voltage U=0.17% of rdg, Power U=0.48%) (K=2), at the 95% confidence level.

Fidelity Index and Gamut Index Calculation

The R_f , R_g was calculated according to IES TM-30-15 by using calculation tools. The calculation was based on the measured SPD from 380nm to 780nm with 1nm intervals. All the colors in this report is for reference only.

FINAL

5. Test Result

[Integrating Sphere System]

Total operating time for integrating sphere test: **1.0 hour**

Test orientation: **Downward**

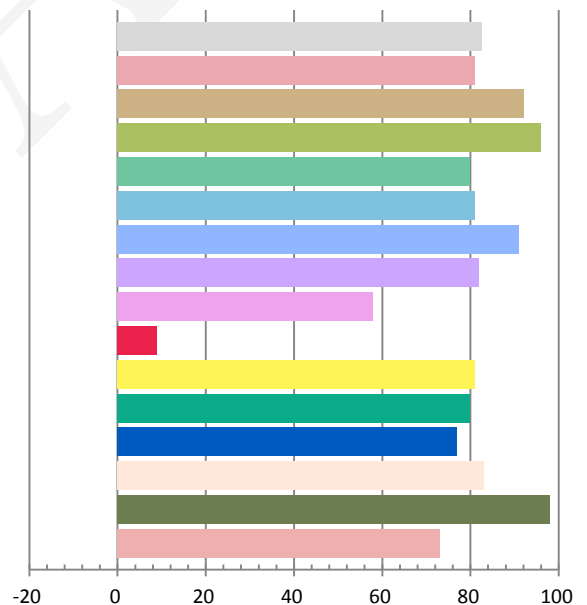
Photometric and Electrical Measurement Result

Voltage (V)	Frequency (Hz)	Current (A)	Power (W)	Power Factor	Luminous Flux(lm)	Efficacy (lm/W)
120	60	0.1247	14.91	0.9966	1276.3	85.57

Radiant Flux (W)	CCT (K)	Duv	x	y	u'	v'
3.9754	2700	0.000522	0.4608	0.4122	0.2624	0.5281

Color Rendering Index

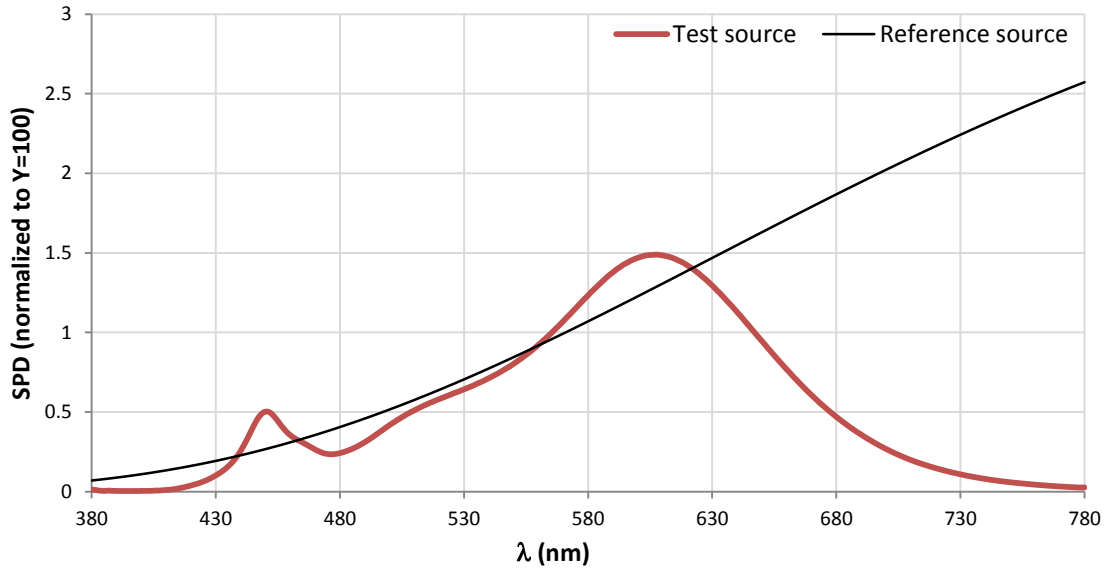
Ra			
82.5			
R1	R2	R3	R4
81	92	96	80
R5	R6	R7	R8
81	91	82	58
R9	R10	R11	R12
9	81	80	77
R13	R14	R15	
83	98	73	



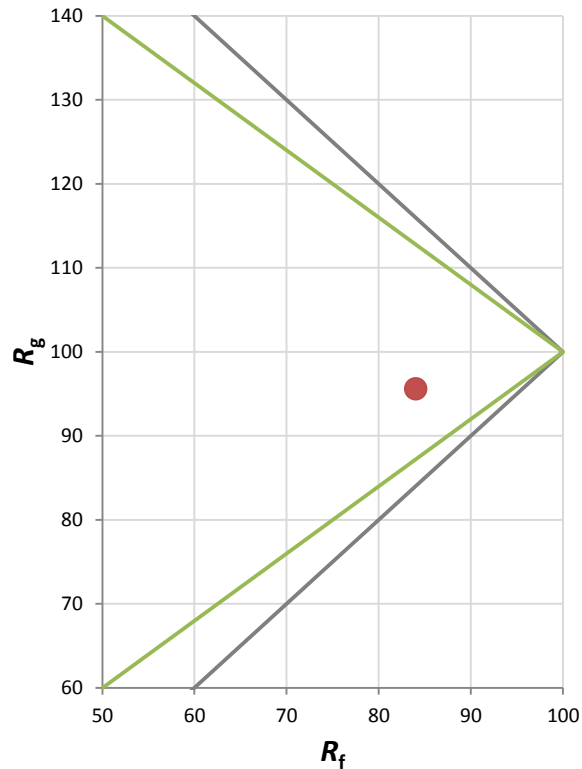
Fidelity Index and Gamut Index

Fidelity Index R_f	84
Gamut Index R_g	96

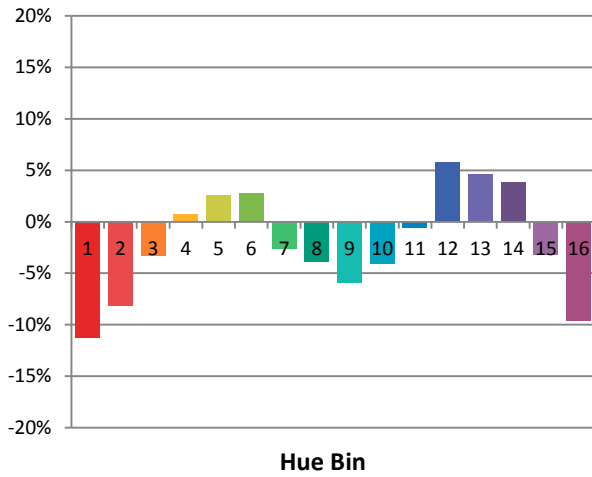
Spectral Power Distribution Comparison



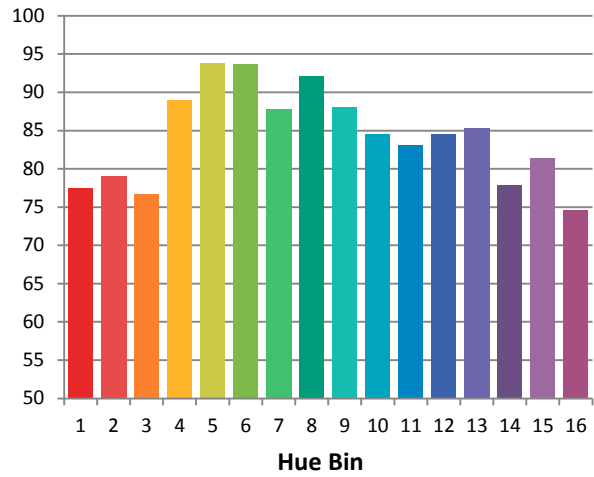
Plot of R_g versus R_f



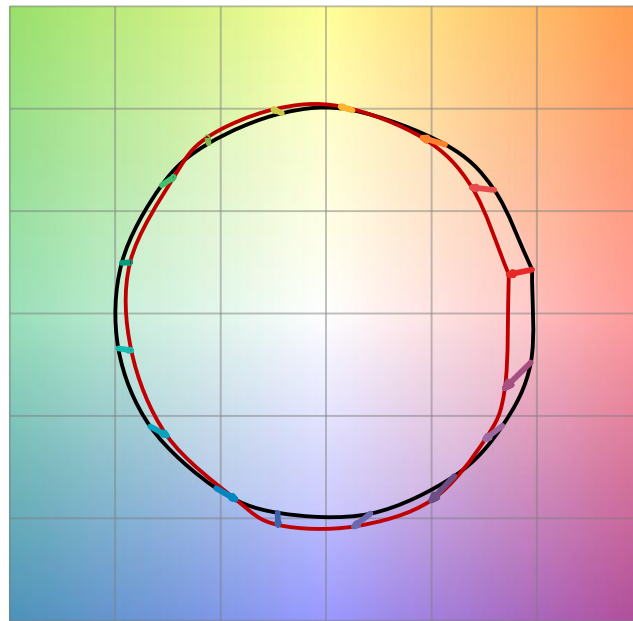
Chroma Shift by Hue



R_f by Hue

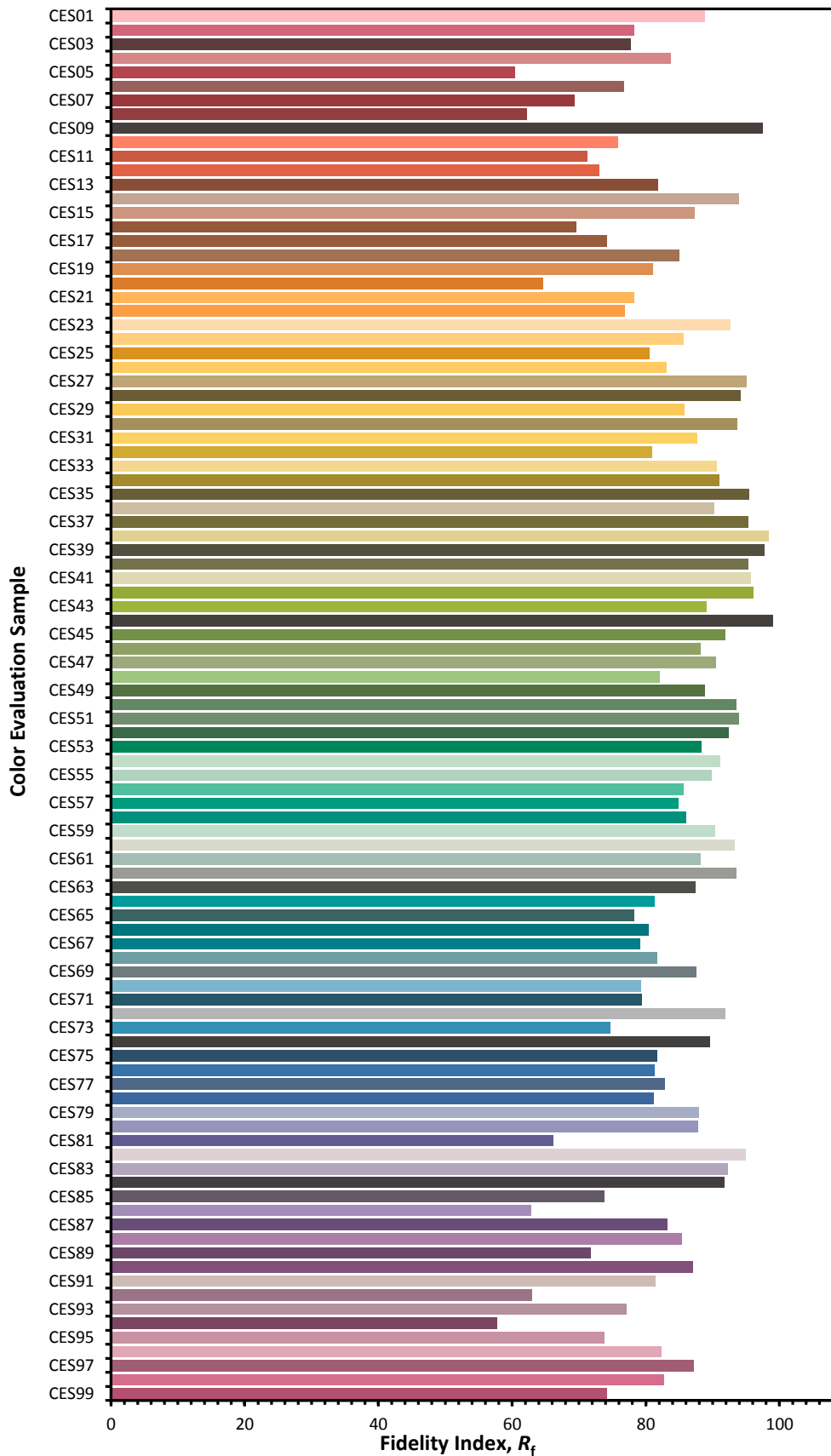


Color Vector Graphic

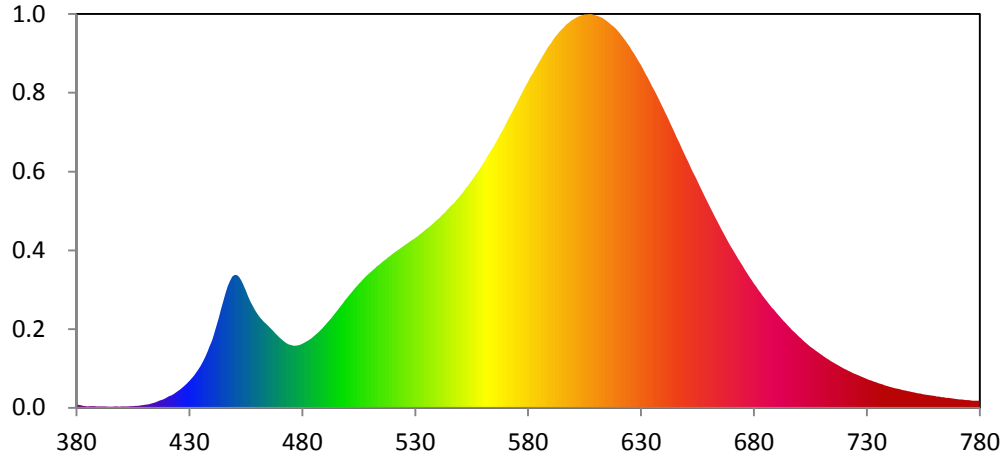


— Reference Illuminat — Test Source

Color Fidelity by CES Sample



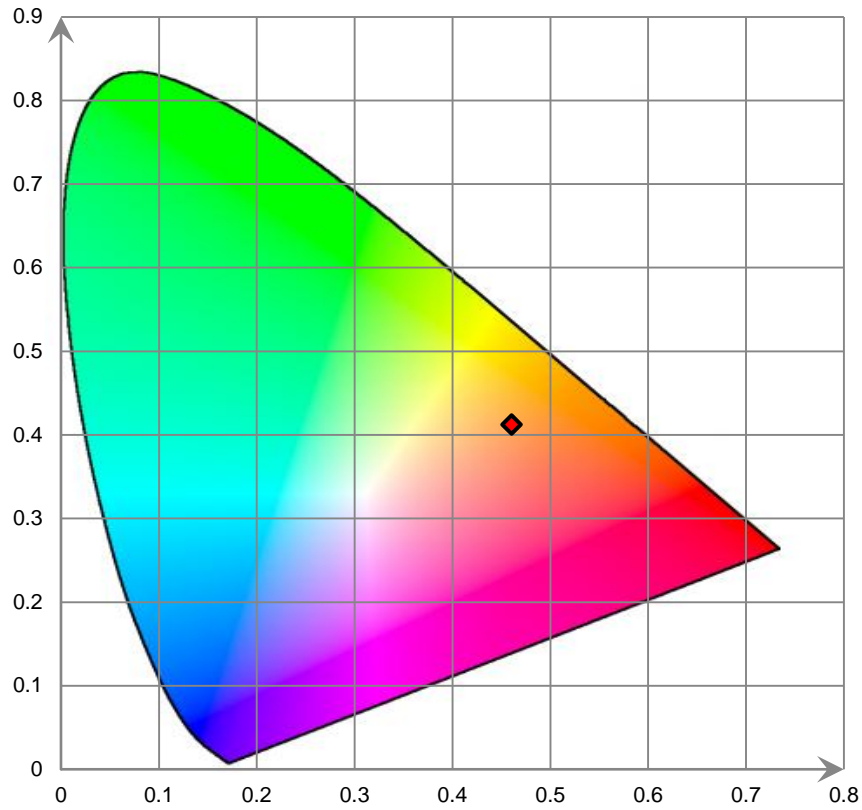
Relative Spectral Power Distribution



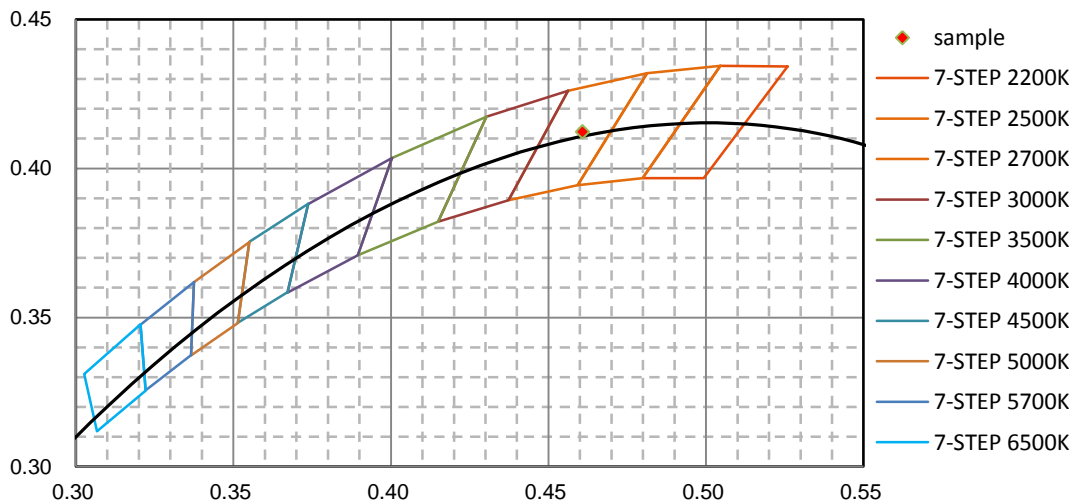
nm	mW	nm	mW	nm	mW	nm	mW	nm	mW
380	2.374E-01	421	8.046E-01	462	6.234E+00	503	8.390E+00	544	1.394E+01
381	2.093E-01	422	8.895E-01	463	6.060E+00	504	8.561E+00	545	1.411E+01
382	1.813E-01	423	9.804E-01	464	5.924E+00	505	8.746E+00	546	1.429E+01
383	1.221E-01	424	1.081E+00	465	5.764E+00	506	8.910E+00	547	1.446E+01
384	1.095E-01	425	1.193E+00	466	5.605E+00	507	9.097E+00	548	1.463E+01
385	8.316E-02	426	1.307E+00	467	5.445E+00	508	9.249E+00	549	1.481E+01
386	1.103E-01	427	1.441E+00	468	5.277E+00	509	9.404E+00	550	1.501E+01
387	1.208E-01	428	1.591E+00	469	5.120E+00	510	9.548E+00	551	1.521E+01
388	1.012E-01	429	1.743E+00	470	4.951E+00	511	9.705E+00	552	1.541E+01
389	9.724E-02	430	1.903E+00	471	4.806E+00	512	9.839E+00	553	1.562E+01
390	9.157E-02	431	2.085E+00	472	4.676E+00	513	9.986E+00	554	1.584E+01
391	7.699E-02	432	2.268E+00	473	4.558E+00	514	1.012E+01	555	1.605E+01
392	7.693E-02	433	2.480E+00	474	4.478E+00	515	1.025E+01	556	1.628E+01
393	7.864E-02	434	2.709E+00	475	4.425E+00	516	1.039E+01	557	1.650E+01
394	7.501E-02	435	2.970E+00	476	4.395E+00	517	1.050E+01	558	1.675E+01
395	7.397E-02	436	3.252E+00	477	4.393E+00	518	1.063E+01	559	1.699E+01
396	7.637E-02	437	3.577E+00	478	4.417E+00	519	1.075E+01	560	1.725E+01
397	7.772E-02	438	3.930E+00	479	4.460E+00	520	1.087E+01	561	1.749E+01
398	8.466E-02	439	4.337E+00	480	4.524E+00	521	1.098E+01	562	1.777E+01
399	7.384E-02	440	4.780E+00	481	4.601E+00	522	1.110E+01	563	1.802E+01
400	9.473E-02	441	5.290E+00	482	4.700E+00	523	1.121E+01	564	1.829E+01
401	8.802E-02	442	5.825E+00	483	4.798E+00	524	1.133E+01	565	1.856E+01
402	9.088E-02	443	6.381E+00	484	4.909E+00	525	1.144E+01	566	1.885E+01
403	9.517E-02	444	6.993E+00	485	5.033E+00	526	1.157E+01	567	1.914E+01
404	1.004E-01	445	7.564E+00	486	5.169E+00	527	1.167E+01	568	1.942E+01
405	1.155E-01	446	8.125E+00	487	5.307E+00	528	1.177E+01	569	1.971E+01
406	1.329E-01	447	8.623E+00	488	5.468E+00	529	1.190E+01	570	2.002E+01
407	1.274E-01	448	8.981E+00	489	5.630E+00	530	1.201E+01	571	2.033E+01
408	1.516E-01	449	9.264E+00	490	5.809E+00	531	1.213E+01	572	2.063E+01
409	1.757E-01	450	9.388E+00	491	5.983E+00	532	1.225E+01	573	2.091E+01
410	1.954E-01	451	9.389E+00	492	6.174E+00	533	1.237E+01	574	2.124E+01
411	2.190E-01	452	9.251E+00	493	6.370E+00	534	1.250E+01	575	2.153E+01
412	2.500E-01	453	8.996E+00	494	6.582E+00	535	1.264E+01	576	2.184E+01
413	2.910E-01	454	8.653E+00	495	6.778E+00	536	1.277E+01	577	2.215E+01
414	3.322E-01	455	8.294E+00	496	6.987E+00	537	1.289E+01	578	2.246E+01
415	3.884E-01	456	7.896E+00	497	7.195E+00	538	1.303E+01	579	2.275E+01
416	4.430E-01	457	7.528E+00	498	7.400E+00	539	1.318E+01	580	2.304E+01
417	5.064E-01	458	7.194E+00	499	7.611E+00	540	1.333E+01	581	2.336E+01
418	5.718E-01	459	6.888E+00	500	7.808E+00	541	1.347E+01	582	2.364E+01
419	6.411E-01	460	6.640E+00	501	8.005E+00	542	1.363E+01	583	2.392E+01
420	7.247E-01	461	6.413E+00	502	8.188E+00	543	1.378E+01	584	2.420E+01

nm	mW	nm	mW	nm	mW	nm	mW	nm	mW
585	2.448E+01	626	2.525E+01	667	1.221E+01	708	3.953E+00	749	1.141E+00
586	2.475E+01	627	2.501E+01	668	1.191E+01	709	3.833E+00	750	1.105E+00
587	2.503E+01	628	2.475E+01	669	1.163E+01	710	3.722E+00	751	1.073E+00
588	2.529E+01	629	2.448E+01	670	1.135E+01	711	3.613E+00	752	1.044E+00
589	2.553E+01	630	2.421E+01	671	1.107E+01	712	3.507E+00	753	1.011E+00
590	2.575E+01	631	2.392E+01	672	1.080E+01	713	3.404E+00	754	9.865E-01
591	2.598E+01	632	2.361E+01	673	1.052E+01	714	3.304E+00	755	9.564E-01
592	2.621E+01	633	2.333E+01	674	1.026E+01	715	3.213E+00	756	9.290E-01
593	2.639E+01	634	2.302E+01	675	1.001E+01	716	3.114E+00	757	9.001E-01
594	2.660E+01	635	2.270E+01	676	9.758E+00	717	3.027E+00	758	8.766E-01
595	2.677E+01	636	2.238E+01	677	9.503E+00	718	2.935E+00	759	8.483E-01
596	2.691E+01	637	2.207E+01	678	9.260E+00	719	2.852E+00	760	8.250E-01
597	2.709E+01	638	2.176E+01	679	9.022E+00	720	2.764E+00	761	7.954E-01
598	2.722E+01	639	2.142E+01	680	8.781E+00	721	2.681E+00	762	7.790E-01
599	2.734E+01	640	2.110E+01	681	8.559E+00	722	2.603E+00	763	7.504E-01
600	2.745E+01	641	2.076E+01	682	8.333E+00	723	2.527E+00	764	7.340E-01
601	2.755E+01	642	2.044E+01	683	8.110E+00	724	2.448E+00	765	7.112E-01
602	2.763E+01	643	2.008E+01	684	7.896E+00	725	2.379E+00	766	6.866E-01
603	2.771E+01	644	1.974E+01	685	7.686E+00	726	2.306E+00	767	6.687E-01
604	2.776E+01	645	1.941E+01	686	7.475E+00	727	2.234E+00	768	6.495E-01
605	2.779E+01	646	1.905E+01	687	7.276E+00	728	2.166E+00	769	6.289E-01
606	2.779E+01	647	1.872E+01	688	7.076E+00	729	2.102E+00	770	6.113E-01
607	2.782E+01	648	1.836E+01	689	6.888E+00	730	2.032E+00	771	5.929E-01
608	2.783E+01	649	1.803E+01	690	6.694E+00	731	1.971E+00	772	5.759E-01
609	2.778E+01	650	1.769E+01	691	6.508E+00	732	1.911E+00	773	5.589E-01
610	2.774E+01	651	1.736E+01	692	6.326E+00	733	1.854E+00	774	5.459E-01
611	2.768E+01	652	1.700E+01	693	6.149E+00	734	1.797E+00	775	5.328E-01
612	2.762E+01	653	1.667E+01	694	5.982E+00	735	1.743E+00	776	5.181E-01
613	2.754E+01	654	1.633E+01	695	5.811E+00	736	1.693E+00	777	5.011E-01
614	2.744E+01	655	1.599E+01	696	5.642E+00	737	1.640E+00	778	4.883E-01
615	2.733E+01	656	1.566E+01	697	5.481E+00	738	1.591E+00	779	4.887E-01
616	2.719E+01	657	1.533E+01	698	5.324E+00	739	1.539E+00	780	4.897E-01
617	2.706E+01	658	1.500E+01	699	5.170E+00	740	1.499E+00		
618	2.692E+01	659	1.468E+01	700	5.022E+00	741	1.446E+00		
619	2.676E+01	660	1.436E+01	701	4.879E+00	742	1.403E+00		
620	2.657E+01	661	1.405E+01	702	4.732E+00	743	1.362E+00		
621	2.638E+01	662	1.373E+01	703	4.596E+00	744	1.323E+00		
622	2.618E+01	663	1.341E+01	704	4.460E+00	745	1.284E+00		
623	2.597E+01	664	1.311E+01	705	4.329E+00	746	1.243E+00		
624	2.574E+01	665	1.280E+01	706	4.200E+00	747	1.210E+00		
625	2.551E+01	666	1.250E+01	707	4.078E+00	748	1.174E+00		

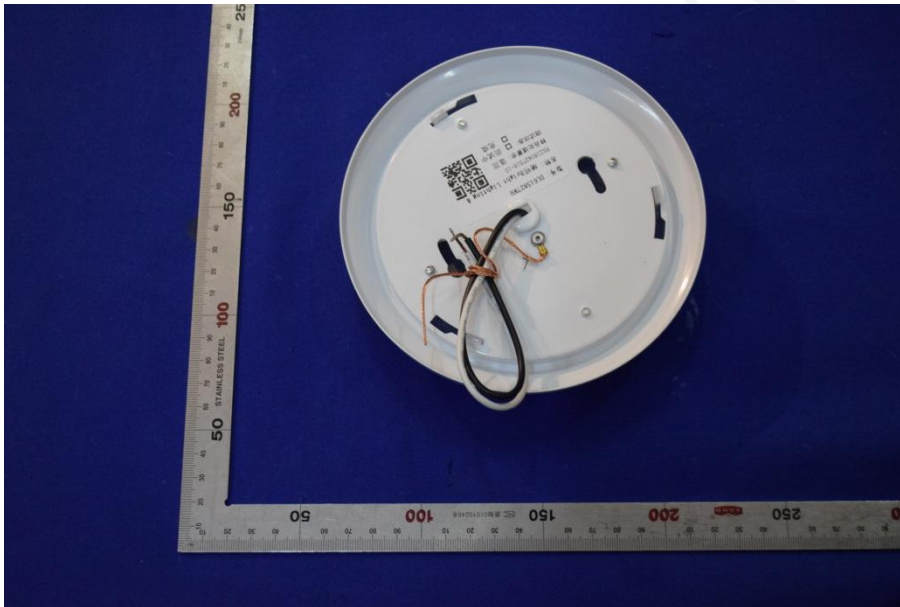
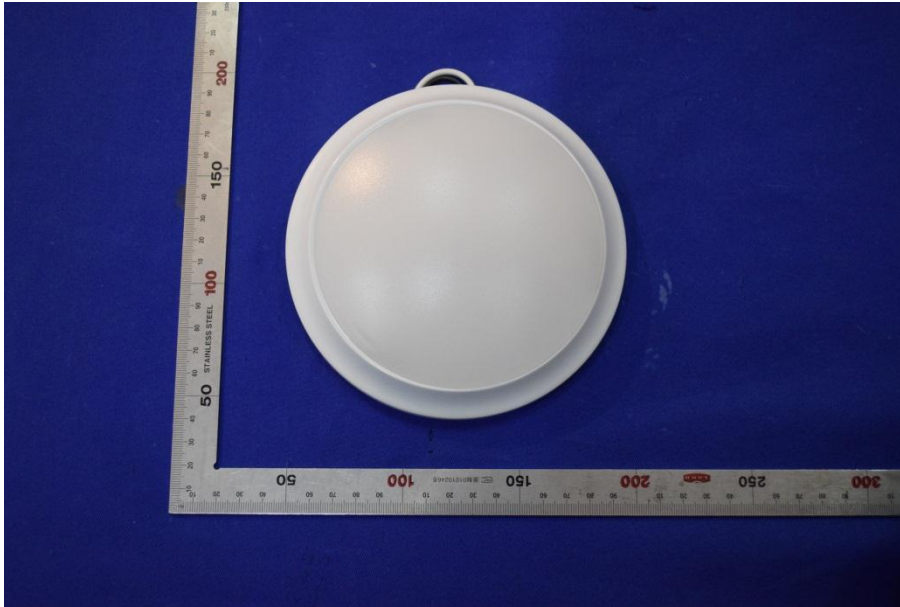
CIE 1931 x y Chromaticity Diagram



7-Step Chromaticity Quadrangles



6. Product Photo



*****END OF REPORT*****