



IES LM-79-08

MEASUREMENT AND TEST REPORT

For

MaxLite Inc

10 York Avenue, West Caldwell, NJ 07006

Test Model: MLRT24D4250ZZ

Report Type:	Electrical and Photometric tests including: Input Current, Power, Power Factor, Luminous Flux, Luminous Efficacy, CRI, CCT, Chromaticity Coordinate, Spectral Power Distribution
Test Engineer:	Carl Du <i>Carl Du</i>
Report Number:	RKS170110003-10A3
Test Date:	2016-11-16
Report Date:	2017-01-11
Reviewed By:	Blake Zhang <i>Blake Zhang</i>
Prepared By:	Bay Area Compliance Laboratories Corp. (Dongguan). Pu Long Cun 69, Puxinghu Industrial Area, Tangxia Town, Dongguan, Guangdong, P.R.China. Tel: +86-0769-86858888 Fax: +86-0769-86858588
Test Facility:	Test facility was located at Pu Long Cun 69, Puxinghu Industrial Area, Tangxia Town, Dongguan, Guangdong, P.R.China.
Accreditation:	The IAS Accreditation Number TL-460.

Note: The test data was only valid for the test sample(s). This test report is prepared for the customer shown above and for the device described herein. It may not be duplicated or used in part without prior written consent from Bay Area Compliance Laboratories Corp. (Dongguan). This report is valid only with a valid digital signature. The digital signature may be available only under the Adobe software above version 7.0.

1. Product Description

General Information:

One sample was received on 2016-11-14 and used for testing.

Model Tested:	MLRT24D4250ZZ
Manufacturer:	MaxLite Inc
Brand Name:	MaxLite
Product Designation:	2x4 Luminaires for Ambient Lighting of Interior Commercial Spaces
Dimmable:	Continuous Dimming
Dimming Range:	10% to 100%
Burning Time Before Test:	0hour(For New Products)

Rated Values:

Rated Voltage/Frequency:	120-277VAC, 60Hz
Rated Power:	42W
Nominal CCT:	5000K
Nominal Lumen Output:	4620lm
Nominal CRI:	80

Note:

1. The applicant *MaxLite Inc* declare that their product with model MLRT24D4250ZZ is the same to the product in report# RKS161114003-10A3 and is authorized by original applicant to use their test data.
2. All the data in previous report (RKS161114003-10A3) is shared in report.

2. Standards Used

- IES LM-79-08: Approved Method: Electrical & Photometric Measurement of Solid-state Lighting Products
- ANSI C82.77-2002: Harmonic Emission Limits – Related Power Quality Requirements for Lighting
- IES TM-30-15: IES Method for Evaluating Light Source Color Rendition (This method is not in IAS accreditation scope)

3. Description of Test Equipment

Device	Manufacture	Model No	Serial No	Test Range	Calibration date	Calibration due date
2.0m integrating sphere	EVERFINE	R98	11010018	R98	2016-11-08	2017-11-07
spectroradiometer	EVERFINE	HAAS-2000	20140912	380-780nm	2016-11-08	2017-11-07
Digital Power Meter	EVERFINE	PF2010A	1011004	600V/20A	2016-07-11	2017-07-10
Digital CC&CV DC Power Supply	EVERFINE	WY305-V1	1101047	30V/5A	2016-07-07	2017-07-06
Temperature/humidity/clock	Victor	VC230	EE023	0~40°C0~90%	2016-03-21	2017-03-20
Standard Light Source	SENSING	N/A	LSD090808	N/A	2016-09-24	2017-09-23

Device	Manufacture	Model No	Serial No	Test Range	Calibration date	Calibration due date
Special zero-voltage synchronous switching AC	EVERFINE	DPS1010-YF	1011001T	0-150V, 0-300V	2016-03-04	2017-03-03

Statement of Traceability: Bay Area Compliance Laboratories Corp. (Dongguan) attested that all calibration has been performed using suitable standards traceable to National Primary Standards and International System of Units (SI).

4. Test Method

Product was tested with no seasoning. All stabilization and measurements were made in compliance with IES LM-79-08. The product was operated at rated voltage or at voltage required by manufacturer. The ambient temperature of the sample was maintained at $25^{\circ}\text{C}\pm 1^{\circ}\text{C}$ during measurement. And relative humidity is less than 65%.

Integrating Sphere System

The system includes AC power source, digital power meter, DC power supply, Spectroradiometer, and integrating sphere. The integrating sphere system is calibrated by standard spectrum light source before measurement.

4π geometry was used during measurement. The product was operated in its intended orientation in application and was recorded in this report.

The uncertainty of the light output (luminous flux) measurements is $U=1.8\%$ ($K=2$), at the 95% confidence level. The uncertainty of the correlated color temperature measurements is $U=20\text{K}$ ($K=2$), at the 95% confidence level. The uncertainty of the CRI is $U=1.8(K=2)$, at the 95% confidence level.

The uncertainty of power meter AC current $U=0.19\%$ of rdg, AC Voltage $U=0.15\%$ of rdg, Power $U=0.20\%$ ($K=2$), at the 95% confidence level.

Fidelity Index and Gamut Index Calculation

The R_i , R_g was calculated according to IES TM-30-15 by using calculation tools. The calculation was based on the measured SPD from 380nm to 780nm with 1nm intervals. All the colors in this report is for reference only.

5. Test Result

[Integrating Sphere System]

Total operating time for integrating sphere test: **0.5 hour**

Test orientation: **Downward**

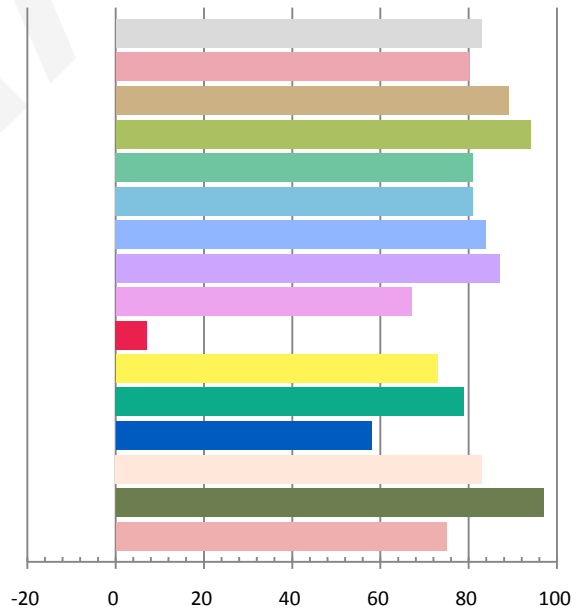
Photometric and Electrical Measurement Result

Voltage (V)	Frequency (Hz)	Current (A)	Power (W)	Power Factor	Luminous Flux(lm)	Efficacy (lm/W)
120.0	60	0.3567	41.8	0.9929	4543.4	108.69

Radiant Flux (W)	CCT (K)	Duv	x	y	u'	v'
13.999	4963	0.00325	0.3468	0.3595	0.2095	0.4887

Color Rendering Index

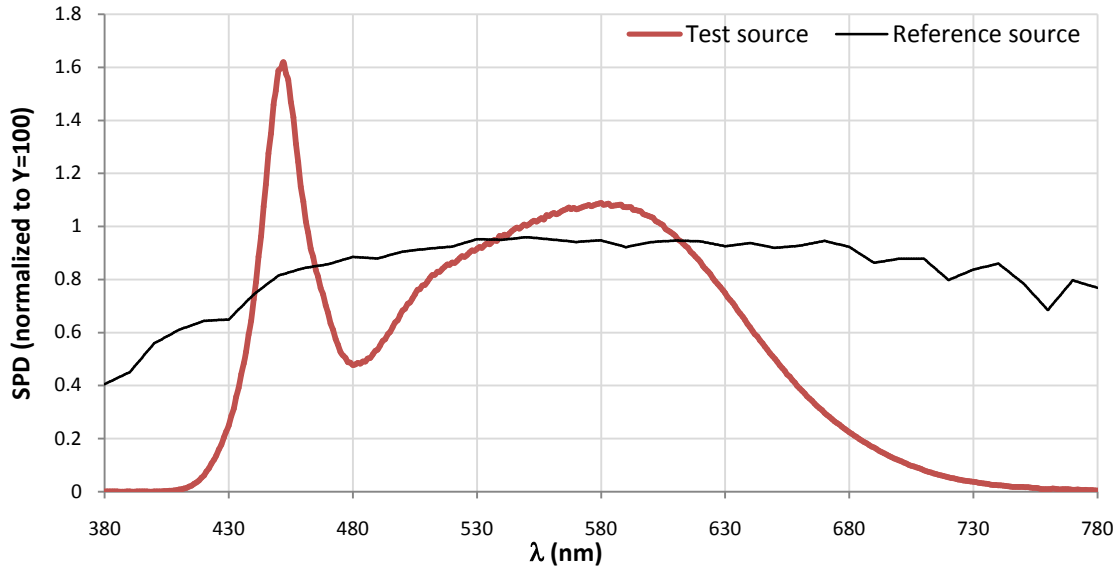
Ra			
82.9			
R1	R2	R3	R4
80	89	94	81
R5	R6	R7	R8
81	84	87	67
R9	R10	R11	R12
7	73	79	58
R13	R14	R15	
83	97	75	



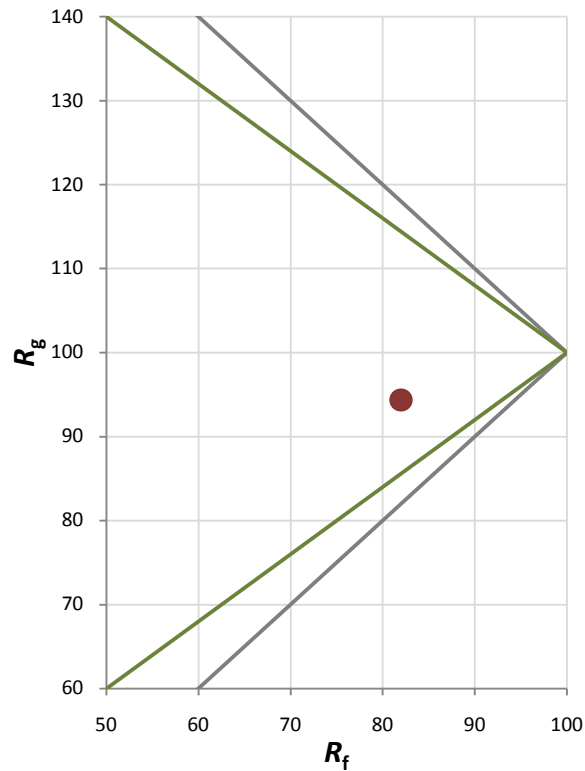
Fidelity Index and Gamut Index

Fidelity Index R_f	83
Gamut Index R_g	94

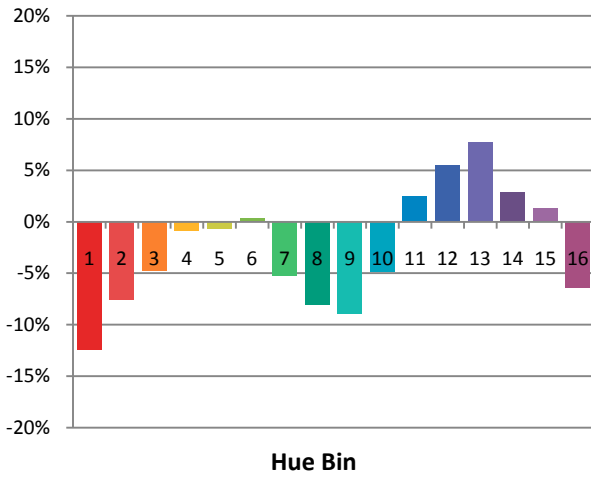
Spectral Power Distribution Comparison



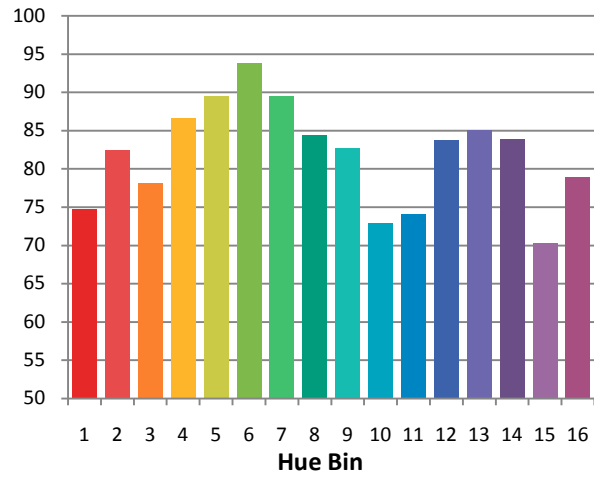
Plot of R_g versus R_f



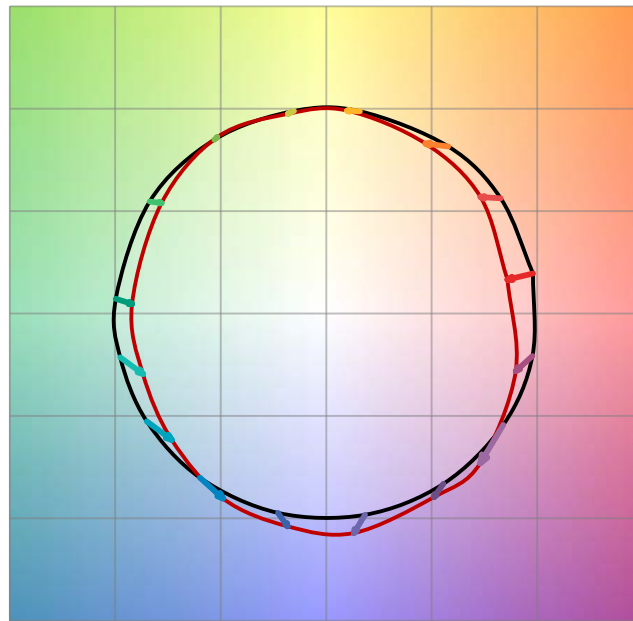
Chroma Shift by Hue



R_f by Hue

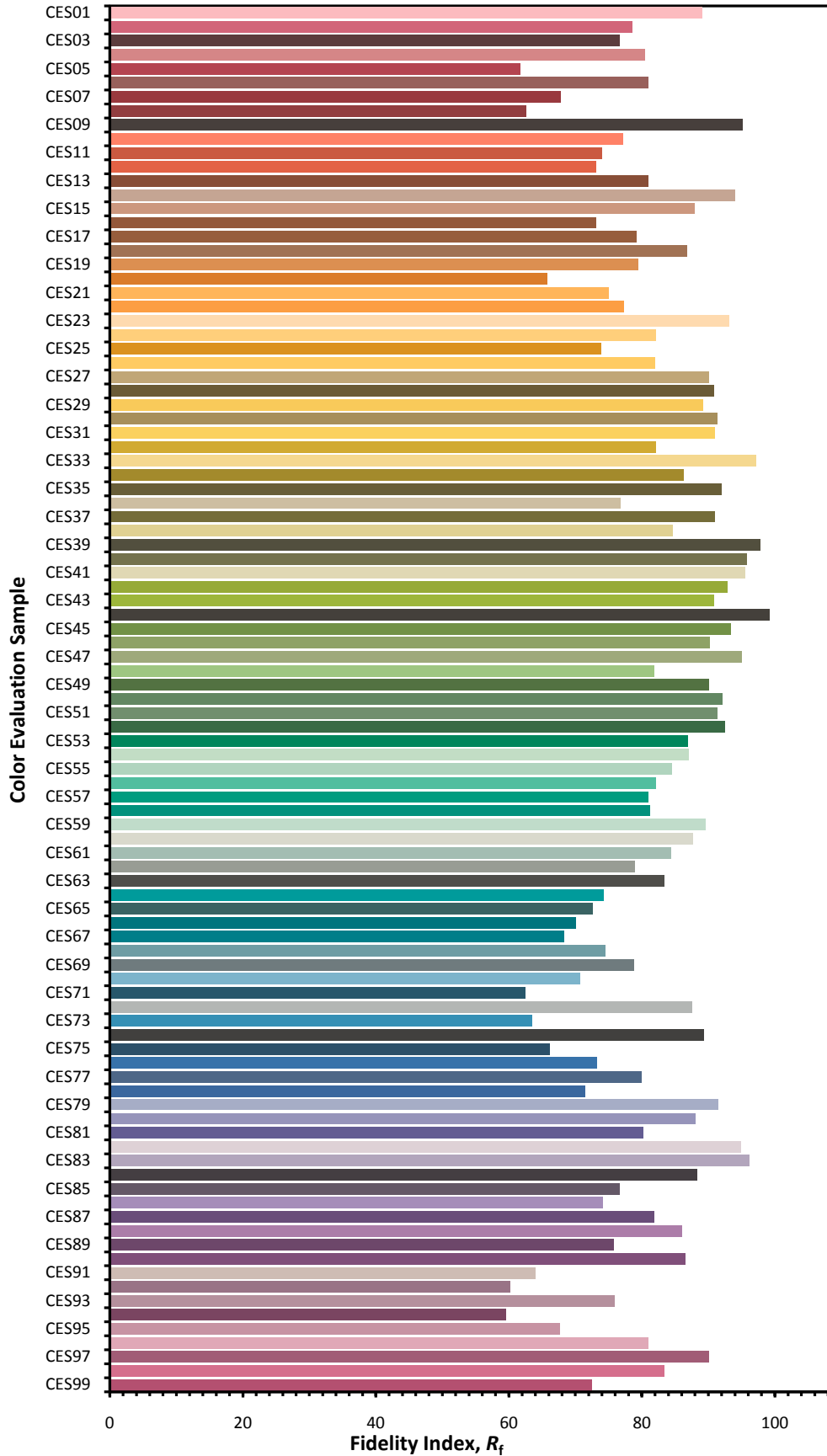


Color Vector Graphic

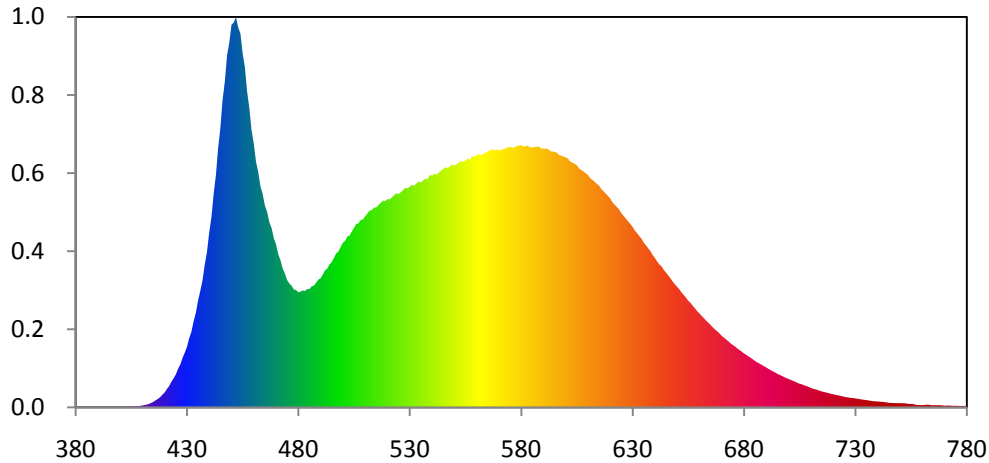


— Reference Illuminat — Test Source

Color Fidelity by CES Sample



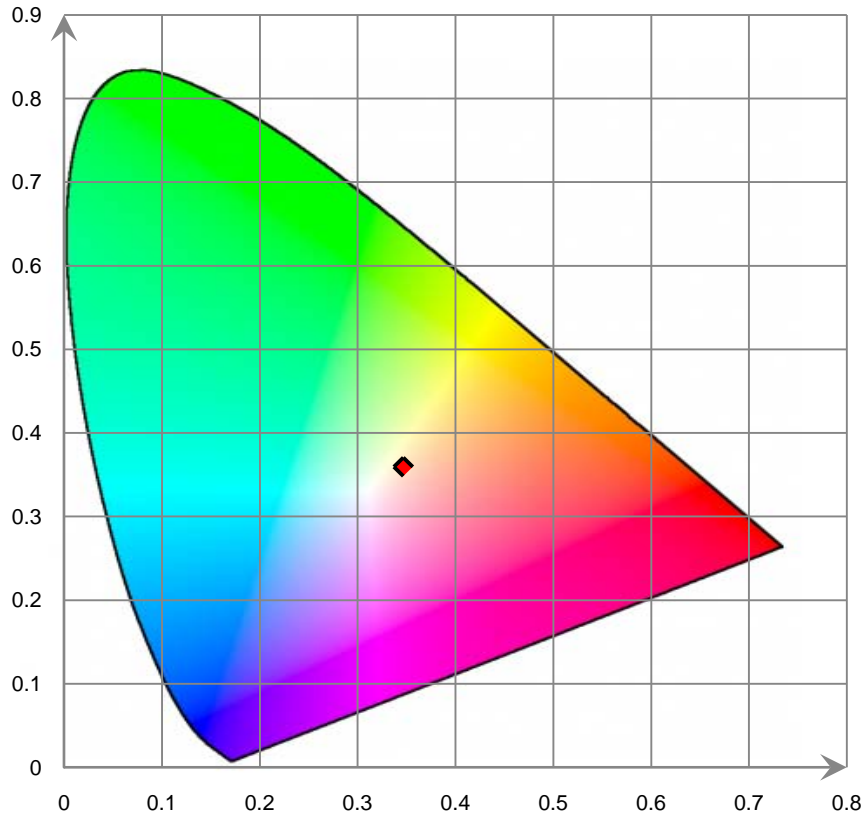
Relative Spectral Power Distribution



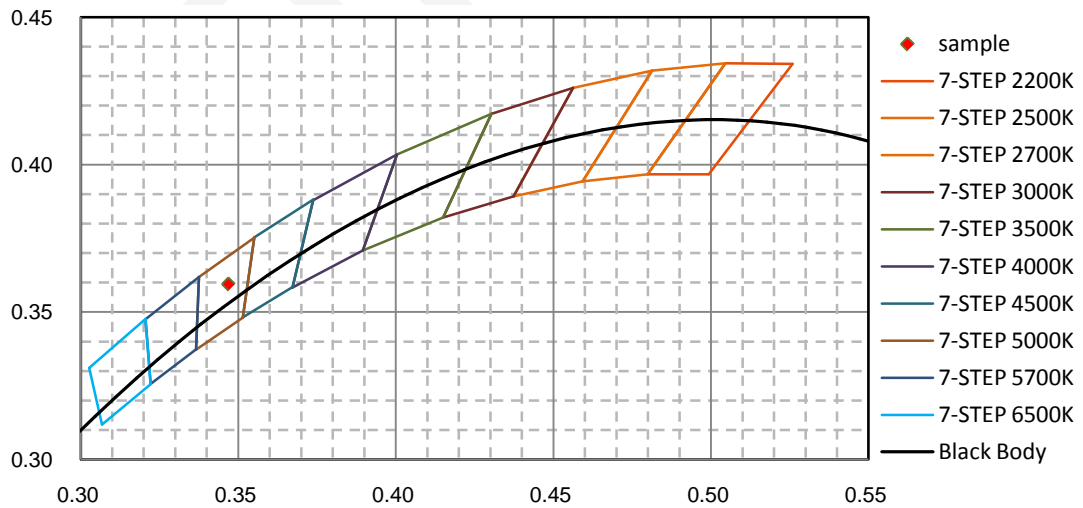
nm	mW	nm	mW	nm	mW	nm	mW	nm	mW
380	6.190E-02	421	5.050E+00	462	6.495E+01	503	4.744E+01	544	6.528E+01
381	4.420E-02	422	5.866E+00	463	6.098E+01	504	4.847E+01	545	6.576E+01
382	4.700E-02	423	7.020E+00	464	5.881E+01	505	4.954E+01	546	6.623E+01
383	5.310E-02	424	8.001E+00	465	5.564E+01	506	5.059E+01	547	6.599E+01
384	4.880E-02	425	9.055E+00	466	5.394E+01	507	5.078E+01	548	6.646E+01
385	3.680E-02	426	1.060E+01	467	5.107E+01	508	5.170E+01	549	6.697E+01
386	3.350E-02	427	1.180E+01	468	4.945E+01	509	5.186E+01	550	6.672E+01
387	2.450E-02	428	1.360E+01	469	4.666E+01	510	5.271E+01	551	6.708E+01
388	2.930E-02	429	1.506E+01	470	4.494E+01	511	5.351E+01	552	6.752E+01
389	4.250E-02	430	1.664E+01	471	4.221E+01	512	5.432E+01	553	6.796E+01
390	4.310E-02	431	1.900E+01	472	4.057E+01	513	5.438E+01	554	6.773E+01
391	3.030E-02	432	2.084E+01	473	3.825E+01	514	5.513E+01	555	6.816E+01
392	2.860E-02	433	2.373E+01	474	3.691E+01	515	5.514E+01	556	6.860E+01
393	4.410E-02	434	2.605E+01	475	3.507E+01	516	5.583E+01	557	6.826E+01
394	4.780E-02	435	2.946E+01	476	3.418E+01	517	5.642E+01	558	6.935E+01
395	6.540E-02	436	3.214E+01	477	3.354E+01	518	5.701E+01	559	6.914E+01
396	5.750E-02	437	3.504E+01	478	3.252E+01	519	5.687E+01	560	6.953E+01
397	4.760E-02	438	3.941E+01	479	3.237E+01	520	5.748E+01	561	6.987E+01
398	3.310E-02	439	4.287E+01	480	3.175E+01	521	5.736E+01	562	6.954E+01
399	1.860E-02	440	4.825E+01	481	3.192E+01	522	5.795E+01	563	6.988E+01
400	4.070E-02	441	5.248E+01	482	3.227E+01	523	5.849E+01	564	7.027E+01
401	5.760E-02	442	5.892E+01	483	3.212E+01	524	5.906E+01	565	7.057E+01
402	8.770E-02	443	6.400E+01	484	3.265E+01	525	5.888E+01	566	7.088E+01
403	1.085E-01	444	7.149E+01	485	3.264E+01	526	5.936E+01	567	7.124E+01
404	1.348E-01	445	7.705E+01	486	3.339E+01	527	5.991E+01	568	7.089E+01
405	1.831E-01	446	8.482E+01	487	3.357E+01	528	6.051E+01	569	7.119E+01
406	2.078E-01	447	8.982E+01	488	3.439E+01	529	6.042E+01	570	7.082E+01
407	2.488E-01	448	9.704E+01	489	3.526E+01	530	6.090E+01	571	7.102E+01
408	2.982E-01	449	1.005E+02	490	3.561E+01	531	6.136E+01	572	7.127E+01
409	4.219E-01	450	1.055E+02	491	3.668E+01	532	6.116E+01	573	7.146E+01
410	5.241E-01	451	1.061E+02	492	3.779E+01	533	6.175E+01	574	7.162E+01
411	6.481E-01	452	1.077E+02	493	3.827E+01	534	6.229E+01	575	7.192E+01
412	7.676E-01	453	1.048E+02	494	3.949E+01	535	6.204E+01	576	7.156E+01
413	9.574E-01	454	1.032E+02	495	4.007E+01	536	6.257E+01	577	7.178E+01
414	1.257E+00	455	9.771E+01	496	4.125E+01	537	6.311E+01	578	7.204E+01
415	1.548E+00	456	9.390E+01	497	4.246E+01	538	6.291E+01	579	7.221E+01
416	1.978E+00	457	8.720E+01	498	4.302E+01	539	6.412E+01	580	7.237E+01
417	2.360E+00	458	8.265E+01	499	4.424E+01	540	6.389E+01	581	7.193E+01
418	2.828E+00	459	7.644E+01	500	4.543E+01	541	6.443E+01	582	7.207E+01
419	3.495E+00	460	7.279E+01	501	4.591E+01	542	6.422E+01	583	7.221E+01
420	4.120E+00	461	6.774E+01	502	4.709E+01	543	6.475E+01	584	7.168E+01

nm	mW	nm	mW	nm	mW	nm	mW	nm	mW
585	7.173E+01	626	5.282E+01	667	2.152E+01	708	5.893E+00	749	1.177E+00
586	7.178E+01	627	5.207E+01	668	2.097E+01	709	5.655E+00	750	1.164E+00
587	7.189E+01	628	5.132E+01	669	2.043E+01	710	5.392E+00	751	1.147E+00
588	7.195E+01	629	5.058E+01	670	1.975E+01	711	5.147E+00	752	1.152E+00
589	7.140E+01	630	4.982E+01	671	1.924E+01	712	4.987E+00	753	1.054E+00
590	7.137E+01	631	4.880E+01	672	1.876E+01	713	4.803E+00	754	9.595E-01
591	7.135E+01	632	4.808E+01	673	1.824E+01	714	4.589E+00	755	9.479E-01
592	7.131E+01	633	4.730E+01	674	1.766E+01	715	4.384E+00	756	9.163E-01
593	7.069E+01	634	4.654E+01	675	1.722E+01	716	4.235E+00	757	7.402E-01
594	7.059E+01	635	4.548E+01	676	1.681E+01	717	4.096E+00	758	6.682E-01
595	7.044E+01	636	4.470E+01	677	1.628E+01	718	3.930E+00	759	6.505E-01
596	7.030E+01	637	4.392E+01	678	1.582E+01	719	3.756E+00	760	6.237E-01
597	6.962E+01	638	4.311E+01	679	1.539E+01	720	3.624E+00	761	6.550E-01
598	6.942E+01	639	4.202E+01	680	1.489E+01	721	3.477E+00	762	7.579E-01
599	6.919E+01	640	4.124E+01	681	1.452E+01	722	3.373E+00	763	7.162E-01
600	6.896E+01	641	4.027E+01	682	1.406E+01	723	3.221E+00	764	6.223E-01
601	6.865E+01	642	3.946E+01	683	1.368E+01	724	3.078E+00	765	5.964E-01
602	6.785E+01	643	3.891E+01	684	1.326E+01	725	2.925E+00	766	6.056E-01
603	6.752E+01	644	3.795E+01	685	1.281E+01	726	2.823E+00	767	5.986E-01
604	6.718E+01	645	3.719E+01	686	1.241E+01	727	2.713E+00	768	6.002E-01
605	6.681E+01	646	3.641E+01	687	1.208E+01	728	2.614E+00	769	5.598E-01
606	6.591E+01	647	3.564E+01	688	1.172E+01	729	2.566E+00	770	4.721E-01
607	6.550E+01	648	3.471E+01	689	1.134E+01	730	2.482E+00	771	4.940E-01
608	6.508E+01	649	3.398E+01	690	1.103E+01	731	2.391E+00	772	5.181E-01
609	6.460E+01	650	3.327E+01	691	1.063E+01	732	2.267E+00	773	4.471E-01
610	6.411E+01	651	3.258E+01	692	1.030E+01	733	2.168E+00	774	4.343E-01
611	6.323E+01	652	3.172E+01	693	9.939E+00	734	2.087E+00	775	4.362E-01
612	6.278E+01	653	3.098E+01	694	9.635E+00	735	1.995E+00	776	4.307E-01
613	6.221E+01	654	3.027E+01	695	9.267E+00	736	1.912E+00	777	3.956E-01
614	6.165E+01	655	2.940E+01	696	8.981E+00	737	1.798E+00	778	4.042E-01
615	6.114E+01	656	2.887E+01	697	8.700E+00	738	1.698E+00	779	3.401E-01
616	6.020E+01	657	2.803E+01	698	8.371E+00	739	1.670E+00	780	3.190E-01
617	5.962E+01	658	2.735E+01	699	8.087E+00	740	1.636E+00		
618	5.895E+01	659	2.653E+01	700	7.832E+00	741	1.578E+00		
619	5.829E+01	660	2.592E+01	701	7.605E+00	742	1.522E+00		
620	5.762E+01	661	2.528E+01	702	7.323E+00	743	1.450E+00		
621	5.657E+01	662	2.464E+01	703	7.078E+00	744	1.377E+00		
622	5.592E+01	663	2.394E+01	704	6.766E+00	745	1.257E+00		
623	5.525E+01	664	2.336E+01	705	6.521E+00	746	1.212E+00		
624	5.458E+01	665	2.276E+01	706	6.346E+00	747	1.208E+00		
625	5.354E+01	666	2.208E+01	707	6.105E+00	748	1.175E+00		

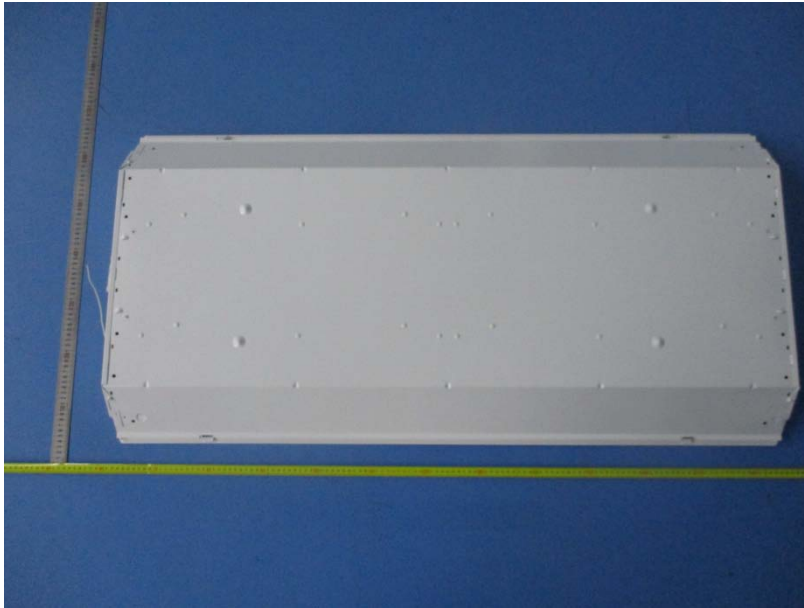
CIE 1931 x y Chromaticity Diagram



7-Step Chromaticity Quadrangles



6. Product Photo



*****END OF REPORT*****